

Product datasheet for TA334503

Isoleucyl tRNA synthetase (IARS) Rabbit Polyclonal Antibody

Product data:

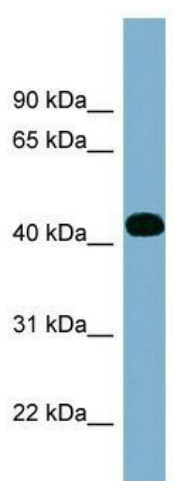
Product Type:	Primary Antibodies
Applications:	WB
Recommended Dilution:	WB
Reactivity:	Human
Host:	Rabbit
Isotype:	IgG
Clonality:	Polyclonal
Immunogen:	The immunogen for anti-ITPK1 antibody: synthetic peptide directed towards the middle region of human ITPK1. Synthetic peptide located within the following region: NAIQPPCVQNFHNAVLYKVFVVGESYTVVQRPSLKNFSAGTSDRESI
Formulation:	Liquid. Purified antibody supplied in 1x PBS buffer with 0.09% (w/v) sodium azide and 2% sucrose.
Purification:	Affinity Purified
Conjugation:	Unconjugated
Storage:	Store at -20°C as received.
Stability:	Stable for 12 months from date of receipt.
Predicted Protein Size:	45 kDa
Gene Name:	isoleucyl-tRNA synthetase
Database Link:	NP_038203 Entrez Gene 3376 Human P41252
Background:	ITPK1 is the kinase that can phosphorylate various inositol polyphosphate such as Ins(3,4,5,6)P4 or Ins(1,3,4)P3. It may also act as an isomerase that interconverts the inositol tetraphosphate isomers Ins(1,3,4,5)P4 and Ins(1,3,4,6)P4 in the presence of ADP and magnesium.
Synonyms:	IARS1; ILERS; ILRS; IRS; PRO0785
Note:	Immunogen Sequence Homology: Dog: 100%; Pig: 100%; Rat: 100%; Horse: 100%; Human: 100%; Mouse: 100%; Bovine: 100%; Rabbit: 100%; Guinea pig: 100%


[View online »](#)

Protein Families: Druggable Genome

Protein Pathways: Aminoacyl-tRNA biosynthesis, Valine, leucine and isoleucine biosynthesis

Product images:



WB Suggested Anti-ITPK1 Antibody Titration: 0.2-1 ug/ml; ELISA Titer: 1: 312500; Positive Control: Human Spleen