

## Product datasheet for **TA334502**

### ITPK1 Rabbit Polyclonal Antibody

#### Product data:

Product Type:	Primary Antibodies
Applications:	WB
Recommended Dilution:	WB
Reactivity:	Human
Host:	Rabbit
Isotype:	IgG
Clonality:	Polyclonal
Immunogen:	The immunogen for anti-ITPK1 antibody: synthetic peptide directed towards the N terminal of human ITPK1. Synthetic peptide located within the following region: MEVWQLNLSRPIEEQGPLDVIIHKLTDVILEADQNDSQSLELVHRFQEYI
Formulation:	Liquid. Purified antibody supplied in 1x PBS buffer with 0.09% (w/v) sodium azide and 2% sucrose. <i>Note that this product is shipped as lyophilized powder to China customers.</i>
Purification:	Affinity Purified
Conjugation:	Unconjugated
Storage:	Store at -20°C as received.
Stability:	Stable for 12 months from date of receipt.
Predicted Protein Size:	45 kDa
Gene Name:	inositol-tetrakisphosphate 1-kinase
Database Link:	<a href="#">NP_055031</a> <a href="#">Entrez Gene 3705 Human</a> <a href="#">Q13572</a>
Background:	ITPK1 is the kinase that can phosphorylate various inositol polyphosphate such as Ins(3,4,5,6)P4 or Ins(1,3,4)P3. It may also act as an isomerase that interconverts the inositol tetraphosphate isomers Ins(1,3,4,5)P4 and Ins(1,3,4,6)P4 in the presence of ADP and magnesium. It probably acts as the rate-limiting enzyme of the InsP6 pathway. ITPK1 modifies TNF-alpha-induced apoptosis by interfering with the activation of TNFRSF1A-associated death domain.



[View online »](#)

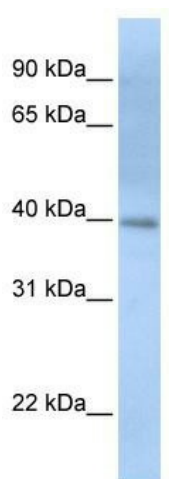
**Synonyms:** ITRPK1

**Note:** Immunogen Sequence Homology: Dog: 100%; Pig: 100%; Rat: 100%; Horse: 100%; Human: 100%; Mouse: 100%; Bovine: 100%; Rabbit: 100%; Guinea pig: 100%; Zebrafish: 79%

**Protein Families:** Druggable Genome

**Protein Pathways:** Inositol phosphate metabolism, Metabolic pathways, Phosphatidylinositol signaling system

**Product images:**



WB Suggested Anti-ITPK1 Antibody Titration: 0.2-1 ug/ml; ELISA Titer: 1: 312500; Positive Control: Human heart