

Product datasheet for **TA334501**

THYN1 Rabbit Polyclonal Antibody

Product data:

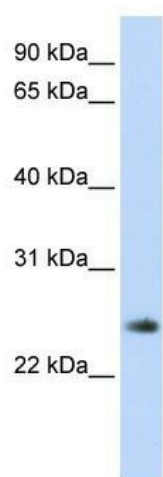
Product Type:	Primary Antibodies
Applications:	WB
Recommended Dilution:	WB
Reactivity:	Human
Host:	Rabbit
Isotype:	IgG
Clonality:	Polyclonal
Immunogen:	The immunogen for anti-THYN1 antibody: synthetic peptide directed towards the middle region of human THYN1. Synthetic peptide located within the following region: NPHYDPSSKEDNPKWSMVDVQFVRMMKRFIPLAELKSYHQAHKATGGPLK
Formulation:	Liquid. Purified antibody supplied in 1x PBS buffer with 0.09% (w/v) sodium azide and 2% sucrose. <i>Note that this product is shipped as lyophilized powder to China customers.</i>
Purification:	Affinity Purified
Conjugation:	Unconjugated
Storage:	Store at -20°C as received.
Stability:	Stable for 12 months from date of receipt.
Predicted Protein Size:	26 kDa
Gene Name:	thymocyte nuclear protein 1
Database Link:	NP_054893 Entrez Gene 29087 Human Q9P016
Background:	THYN1 is a protein that is highly conserved among vertebrates and plant species and may be involved in the induction of apoptosis. This gene encodes a protein that is highly conserved among vertebrates and plant species and may be involved in the induction of apoptosis. Alternatively spliced transcript variants encoding different isoforms have been described.
Synonyms:	HSPC144; MDS012; MY105; THY28; THY28KD



[View online »](#)

Note: Immunogen Sequence Homology: Pig: 100%; Rat: 100%; Horse: 100%; Human: 100%; Rabbit: 100%; Dog: 93%; Mouse: 93%; Zebrafish: 92%; Guinea pig: 92%; Bovine: 86%

Product images:



WB Suggested Anti-THYN1 Antibody Titration:
0.2-1 ug/ml; ELISA Titer: 1: 312500; Positive
Control: Human Muscle