

Product datasheet for **TA334499**

HSPC142 (BABAM1) Rabbit Polyclonal Antibody

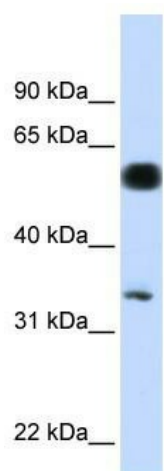
Product data:

Product Type:	Primary Antibodies
Applications:	WB
Recommended Dilution:	WB
Reactivity:	Human
Host:	Rabbit
Isotype:	IgG
Clonality:	Polyclonal
Immunogen:	The immunogen for anti-BABAN1 antibody: synthetic peptide directed towards the N terminal of human BABAN1. Synthetic peptide located within the following region: DRAVGAQASVGSRSEGEAASADDGSLNTSGAGPKSWQVPPPAPEVQIR
Formulation:	Liquid. Purified antibody supplied in 1x PBS buffer with 0.09% (w/v) sodium azide and 2% sucrose. <i>Note that this product is shipped as lyophilized powder to China customers.</i>
Purification:	Affinity Purified
Conjugation:	Unconjugated
Storage:	Store at -20°C as received.
Stability:	Stable for 12 months from date of receipt.
Predicted Protein Size:	36 kDa
Gene Name:	BRISC and BRCA1 A complex member 1
Database Link:	NP_054892 Entrez Gene 29086 Human Q9NWW8
Background:	The exact function of BABAN1 remains unknown.
Synonyms:	C19orf62; HSPC142; MERIT40; NBA1
Note:	Immunogen Sequence Homology: Dog: 100%; Pig: 100%; Rat: 100%; Horse: 100%; Human: 100%; Mouse: 100%; Guinea pig: 100%; Bovine: 93%



[View online »](#)

Product images:



WB Suggested Anti-C19orf62 Antibody Titration: 0.2-1 ug/ml; ELISA Titer: 1: 1562500; Positive Control: HeLa cell lysate BABAM1 is supported by BioGPS gene expression data to be expressed in HeLa