

Product datasheet for **TA334498**

Phpt1 Rabbit Polyclonal Antibody

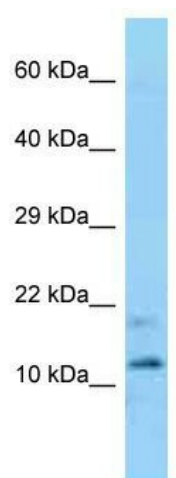
Product data:

| | |
|-------------------------|---|
| Product Type: | Primary Antibodies |
| Applications: | WB |
| Recommended Dilution: | WB |
| Reactivity: | Mouse |
| Host: | Rabbit |
| Isotype: | IgG |
| Clonality: | Polyclonal |
| Immunogen: | The immunogen for anti-Phpt1 antibody is: synthetic peptide directed towards the C-terminal region of Phpt1. Synthetic peptide located within the following region: DCECLGGGRISHQSQDRKIHVYGYSMGYGRAQHSVSTEKIKAKYPDYEVT |
| Formulation: | Liquid. Purified antibody supplied in 1x PBS buffer with 0.09% (w/v) sodium azide and 2% sucrose. <i>Note that this product is shipped as lyophilized powder to China customers.</i> |
| Purification: | Affinity Purified |
| Conjugation: | Unconjugated |
| Storage: | Store at -20°C as received. |
| Stability: | Stable for 12 months from date of receipt. |
| Predicted Protein Size: | 14 kDa |
| Gene Name: | phosphohistidine phosphatase 1 |
| Database Link: | NP_083569 Entrez Gene 75454 Mouse Q9DAK9 |
| Background: | Phpt1 exhibits phosphohistidine phosphatase activity. |
| Synonyms: | 1700008C22Rik; bA216L13.10; CGI-202; DKFZp564M173; HSPC141; OTTHUMP00000022620; PHP14 |
| Note: | Immunogen Sequence Homology: Pig: 100%; Rat: 100%; Human: 100%; Mouse: 100%; Bovine: 100%; Guinea pig: 100%; Dog: 93%; Rabbit: 93%; Zebrafish: 86% |



[View online »](#)

Product images:



WB Suggested Anti-Phpt1 Antibody; Titration: 1.0 ug/ml; Positive Control: Mouse Brain