

Product datasheet for **TA334496**

Methyltransferase like 5 (METTL5) Rabbit Polyclonal Antibody

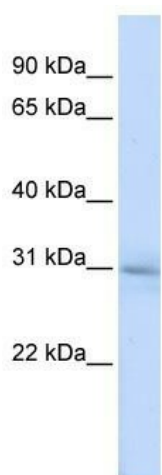
Product data:

Product Type:	Primary Antibodies
Applications:	WB
Recommended Dilution:	WB
Reactivity:	Human
Host:	Rabbit
Isotype:	IgG
Clonality:	Polyclonal
Immunogen:	The immunogen for anti-METTL5 antibody: synthetic peptide directed towards the N terminal of human METTL5. Synthetic peptide located within the following region: KKVRLKELESRLQQVDGFEKPKLLLEQYPTRPHIAACMLYTIHNTYDDIE
Formulation:	Liquid. Purified antibody supplied in 1x PBS buffer with 0.09% (w/v) sodium azide and 2% sucrose. <i>Note that this product is shipped as lyophilized powder to China customers.</i>
Purification:	Affinity Purified
Conjugation:	Unconjugated
Storage:	Store at -20°C as received.
Stability:	Stable for 12 months from date of receipt.
Predicted Protein Size:	24 kDa
Gene Name:	methyltransferase like 5
Database Link:	NP_054887 Entrez Gene 29081 Human Q9NRR9
Background:	METTL5 is a probable methyltransferase.
Synonyms:	HSPC133
Note:	Immunogen Sequence Homology: Dog: 100%; Pig: 100%; Rat: 100%; Horse: 100%; Human: 100%; Bovine: 100%; Guinea pig: 100%; Mouse: 93%; Rabbit: 93%; Zebrafish: 86%
Protein Families:	Druggable Genome



[View online »](#)

Product images:



WB Suggested Anti-METTL5 Antibody Titration:
0.2-1 ug/ml; ELISA Titer: 1: 312500; Positive
Control: HepG2 cell lysate METTL5 is supported by
BioGPS gene expression data to be expressed in
HepG2