

Product datasheet for **TA334493**

NOB1 Rabbit Polyclonal Antibody

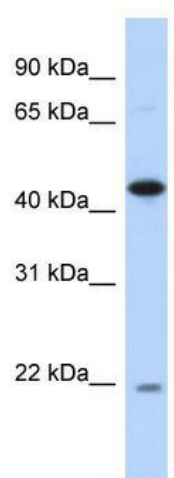
Product data:

Product Type:	Primary Antibodies
Applications:	WB
Recommended Dilution:	WB
Reactivity:	Human
Host:	Rabbit
Isotype:	IgG
Clonality:	Polyclonal
Immunogen:	The immunogen for anti-NOB1 antibody: synthetic peptide directed towards the N terminal of human NOB1. Synthetic peptide located within the following region: TEIRDKATRRRLAVLPYELRFKEPLPEYVRLVTEFSKKTGDYPSLSATDI
Formulation:	Liquid. Purified antibody supplied in 1x PBS buffer with 0.09% (w/v) sodium azide and 2% sucrose. <i>Note that this product is shipped as lyophilized powder to China customers.</i>
Purification:	Affinity Purified
Conjugation:	Unconjugated
Storage:	Store at -20°C as received.
Stability:	Stable for 12 months from date of receipt.
Predicted Protein Size:	47 kDa
Gene Name:	NIN1/PSMD8 binding protein 1 homolog
Database Link:	NP_054781 Entrez Gene 28987 Human Q9ULX3
Background:	NOB1 may play a role in mRNA degradation.
Synonyms:	ART-4; MST158; MSTP158; NOB1P; PSMD8BP1
Note:	Immunogen Sequence Homology: Dog: 100%; Pig: 100%; Rat: 100%; Horse: 100%; Human: 100%; Mouse: 100%; Bovine: 100%; Rabbit: 100%; Guinea pig: 100%; Zebrafish: 93%; Yeast: 77%



[View online »](#)

Product images:



WB Suggested Anti-NOB1 Antibody Titration: 0.2-1 ug/ml; ELISA Titer: 1: 1562500; Positive Control: Transfected 293T