

## Product datasheet for **TA334491**

### Wdr37 Rabbit Polyclonal Antibody

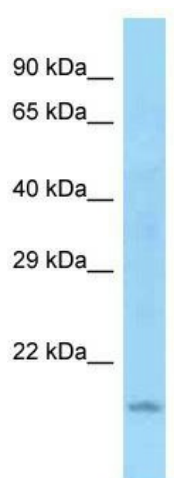
#### Product data:

Product Type:	Primary Antibodies
Applications:	WB
Recommended Dilution:	WB
Reactivity:	Mouse
Host:	Rabbit
Isotype:	IgG
Clonality:	Polyclonal
Immunogen:	The immunogen for anti-Wdr37 antibody is: synthetic peptide directed towards the N-terminal region of Wdr37. Synthetic peptide located within the following region: MPTESGSCSTARQAKQKRKSHLSIRRTNSSEQERTGLPREMLEGQDSKL
Formulation:	Liquid. Purified antibody supplied in 1x PBS buffer with 0.09% (w/v) sodium azide and 2% sucrose. <i>Note that this product is shipped as lyophilized powder to China customers.</i>
Purification:	Affinity Purified
Conjugation:	Unconjugated
Storage:	Store at -20°C as received.
Stability:	Stable for 12 months from date of receipt.
Predicted Protein Size:	19 kDa
Gene Name:	WD repeat domain 37
Database Link:	<a href="#">NP_001034478</a> <a href="#">Entrez Gene 207615 Mouse</a> <a href="#">Q8CBE3</a>
Background:	The function of this protein remains unknown.
Synonyms:	FLJ40354; KIAA0982; OTTHUMP00000018956; RP11-529L18.2
Note:	Immunogen Sequence Homology: Dog: 100%; Pig: 100%; Rat: 100%; Horse: 100%; Human: 100%; Mouse: 100%; Bovine: 100%; Rabbit: 100%; Guinea pig: 100%; Zebrafish: 86%



[View online »](#)

## Product images:



WB Suggested Anti-Wdr37 Antibody; Titration: 1.0 ug/ml; Positive Control: Mouse Heart