

Product datasheet for **TA334490**

REM (REM1) Rabbit Polyclonal Antibody

Product data:

Product Type:	Primary Antibodies
Applications:	WB
Recommended Dilution:	WB
Reactivity:	Human
Host:	Rabbit
Isotype:	IgG
Clonality:	Polyclonal
Immunogen:	The immunogen for anti-REM1 antibody: synthetic peptide directed towards the N terminal of human REM1. Synthetic peptide located within the following region: SDSEGSWEALYRVLLGDPGVGKTSLSLFLAGKQERDLHEQLGEDVYERT
Formulation:	Liquid. Purified antibody supplied in 1x PBS buffer with 0.09% (w/v) sodium azide and 2% sucrose. <i>Note that this product is shipped as lyophilized powder to China customers.</i>
Purification:	Affinity Purified
Conjugation:	Unconjugated
Storage:	Store at -20°C as received.
Stability:	Stable for 12 months from date of receipt.
Predicted Protein Size:	33 kDa
Gene Name:	RRAD and GEM like GTPase 1
Database Link:	NP_054731 Entrez Gene 28954 Human O75628
Background:	The protein encoded by this gene is a GTPase and member of the RAS-like GTP-binding protein family. The encoded protein is expressed in endothelial cells, where it promotes reorganization of the actin cytoskeleton and morphological changes in the cells.
Synonyms:	GD:REM; GES

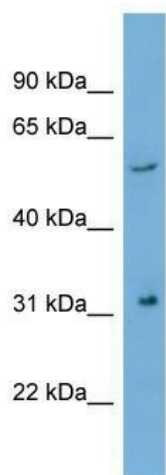


[View online »](#)

Note: Immunogen Sequence Homology: Dog: 100%; Pig: 100%; Rat: 100%; Horse: 100%; Human: 100%; Mouse: 100%; Sheep: 100%; Bovine: 100%; Rabbit: 100%; Guinea pig: 100%; Yeast: 92%; Zebrafish: 86%

Protein Families: Druggable Genome

Product images:



WB Suggested Anti-REM1 Antibody Titration: 0.2-1 ug/ml; Positive Control: Hela cell lysate