

Product datasheet for **TA334484**

Isoleucyl tRNA synthetase (IARS) Rabbit Polyclonal Antibody

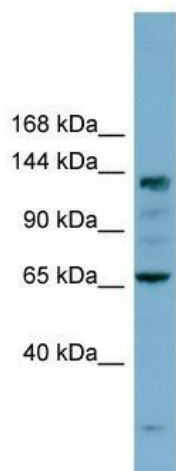
Product data:

Product Type:	Primary Antibodies
Applications:	WB
Recommended Dilution:	WB
Reactivity:	Human
Host:	Rabbit
Isotype:	IgG
Clonality:	Polyclonal
Immunogen:	The immunogen for anti-IARS antibody: synthetic peptide directed towards the N terminal of human IARS. Synthetic peptide located within the following region: SKHKPKFTFYDGPPFATGLPHYGHILAGTIKDIVTRYAHQSGFHVDRRFG
Formulation:	Liquid. Purified antibody supplied in 1x PBS buffer with 0.09% (w/v) sodium azide and 2% sucrose. <i>Note that this product is shipped as lyophilized powder to China customers.</i>
Purification:	Affinity Purified
Conjugation:	Unconjugated
Storage:	Store at -20°C as received.
Stability:	Stable for 12 months from date of receipt.
Predicted Protein Size:	144 kDa
Gene Name:	isoleucyl-tRNA synthetase
Database Link:	NP_038203 Entrez Gene 3376 Human P41252



[View online »](#)

Background:	Aminoacyl-tRNA synthetases catalyze the aminoacylation of tRNA by their cognate amino acid. Because of their central role in linking amino acids with nucleotide triplets contained in tRNAs, aminoacyl-tRNA synthetases are thought to be among the first proteins that appeared in evolution. Isoleucine-tRNA synthetase belongs to the class-I aminoacyl-tRNA synthetase family and has been identified as a target of autoantibodies in the autoimmune disease polymyositis/dermatomyositis. Alternatively spliced transcript variants have been found. [provided by RefSeq, Nov 2012]
Synonyms:	IARS1; ILERS; ILRS; IRS; PRO0785
Note:	Immunogen Sequence Homology: Dog: 100%; Pig: 100%; Human: 100%; Yeast: 100%; Bovine: 93%; Rabbit: 93%; Guinea pig: 93%; Rat: 86%; Horse: 86%; Mouse: 86%; Zebrafish: 79%
Protein Families:	Druggable Genome
Protein Pathways:	Aminoacyl-tRNA biosynthesis, Valine, leucine and isoleucine biosynthesis

Product images:

WB Suggested Anti-IARS Antibody Titration: 0.2-1 ug/ml; ELISA Titer: 1: 1562500; Positive Control: COLO205 cell lysate IARS is supported by BioGPS gene expression data to be expressed in COLO205