

Product datasheet for TA334481

PNMA3 Rabbit Polyclonal Antibody

Product data:

Product Type:	Primary Antibodies
Applications:	WB
Recommended Dilution:	WB
Reactivity:	Human
Host:	Rabbit
Isotype:	IgG
Clonality:	Polyclonal
Immunogen:	The immunogen for anti-PNMA3 antibody: synthetic peptide directed towards the N terminal of human PNMA3. Synthetic peptide located within the following region: QDIDYALLPREIPGKGGPWEVIVKPRNSDGEFLNRLNRFLEEERTVSDM
Formulation:	Liquid. Purified antibody supplied in 1x PBS buffer with 0.09% (w/v) sodium azide and 2% sucrose.
Purification:	Affinity Purified
Conjugation:	Unconjugated
Storage:	Store at -20°C as received.
Stability:	Stable for 12 months from date of receipt.
Predicted Protein Size:	52 kDa
Gene Name:	paraneoplastic Ma antigen 3
Database Link:	NP_037496 Entrez Gene 29944 Human Q9UL41
Background:	The specific function of the protein remains unknown. This gene is a member of the paraneoplastic antigen MA (PNMA) gene family, whose protein products share homology with retroviral Gag proteins. They are highly expressed in the brain and also in a range of tumors associated with serious neurological phenotypes. PMID:16407312 reports the presence of a functional -1 ribosomal frameshift signal (consisting of a heptanucleotide shift motif followed 3' by a pseudoknot structure) in this gene, however, the frame-shifted product has not been characterized.

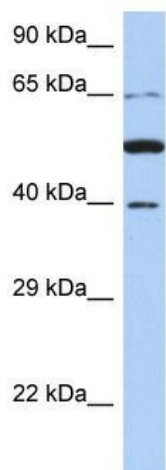


[View online »](#)

Synonyms: MA3; MA5

Note: Immunogen Sequence Homology: Human: 100%; Horse: 93%; Rat: 79%

Product images:



WB Suggested Anti-PNMA3 Antibody Titration:
0.2-1 ug/ml; ELISA Titer: 1: 312500; Positive
Control: 721_B cell lysate