

## Product datasheet for **TA334480**

### Pkn1 Rabbit Polyclonal Antibody

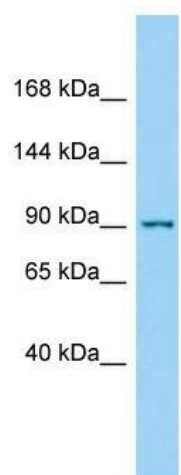
#### Product data:

Product Type:	Primary Antibodies
Applications:	WB
Recommended Dilution:	WB
Reactivity:	Rat
Host:	Rabbit
Isotype:	IgG
Clonality:	Polyclonal
Immunogen:	The immunogen for anti-Pkn1 antibody is: synthetic peptide directed towards the C-terminal region of RAT Pkn1. Synthetic peptide located within the following region: VPTLSGRTDVSNFDEEFTGEAPTLSPPRDARPLTAAEQAAFRDFDFVAGG
Formulation:	Liquid. Purified antibody supplied in 1x PBS buffer with 0.09% (w/v) sodium azide and 2% sucrose. <i>Note that this product is shipped as lyophilized powder to China customers.</i>
Purification:	Affinity Purified
Conjugation:	Unconjugated
Storage:	Store at -20°C as received.
Stability:	Stable for 12 months from date of receipt.
Predicted Protein Size:	104 kDa
Gene Name:	protein kinase N1
Database Link:	<a href="#">NP_058871</a> <a href="#">Entrez Gene 29355 Rat Q63433</a>
Background:	Pkn1 displays phosphorylation dependent protein kinase activity.
Synonyms:	DBK; MGC46204; PAK1; PKN; PKN-ALPHA; PRK1; PRKCL1
Note:	Immunogen Sequence Homology: Dog: 100%; Rat: 100%; Horse: 100%; Human: 100%; Mouse: 100%; Bovine: 100%; Pig: 93%; Guinea pig: 93%



[View online »](#)

## Product images:



Host: Rabbit; Target Name: Pkn1; Sample Tissue: Rat Thymus lysates; Antibody Dilution: 1.0 ug/ml