

Product datasheet for **TA334479**

RPA4 Rabbit Polyclonal Antibody

Product data:

Product Type:	Primary Antibodies
Applications:	WB
Recommended Dilution:	WB
Reactivity:	Human
Host:	Rabbit
Isotype:	IgG
Clonality:	Polyclonal
Immunogen:	The immunogen for anti-RPA4 antibody: synthetic peptide directed towards the C terminal of human RPA4. Synthetic peptide located within the following region: HQEGKSIHELRAQLCDLSVKAIKEAIDYLTVEGHIYPTVDREHFKSAD
Formulation:	Liquid. Purified antibody supplied in 1x PBS buffer with 0.09% (w/v) sodium azide and 2% sucrose. <i>Note that this product is shipped as lyophilized powder to China customers.</i>
Purification:	Affinity Purified
Conjugation:	Unconjugated
Storage:	Store at -20°C as received.
Stability:	Stable for 12 months from date of receipt.
Predicted Protein Size:	29 kDa
Gene Name:	replication protein A4
Database Link:	NP_037479 Entrez Gene 29935 Human Q13156



[View online »](#)

Background: Replication protein A (RPA) is an essential factor for DNA double-strand break repair and cell cycle checkpoint activation. RPA4 is the 32-kDa subunit of the RPA, which associates with the 70- and 13-kDa subunits to form a trimeric RPA complex. Replication protein A (RPA) is an essential factor for DNA double-strand break repair and cell cycle checkpoint activation. This gene encodes the 32-kDa subunit of the RPA, which associates with the 70- and 13-kDa subunits to form a trimeric RPA complex. PRIMARYREFSEQ_SPAN PRIMARY_IDENTIFIER PRIMARY_SPAN COMP 1-1448 BC069824.1 1-1448

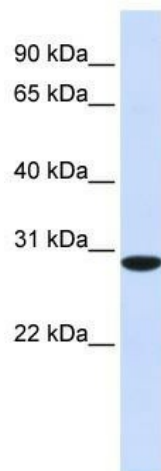
Synonyms: HSU24186

Note: Immunogen Sequence Homology: Human: 100%; Dog: 86%; Pig: 86%; Guinea pig: 86%; Rat: 79%; Horse: 79%; Mouse: 79%; Bovine: 79%; Rabbit: 79%

Protein Families: Druggable Genome

Protein Pathways: DNA replication, Homologous recombination, Mismatch repair, Nucleotide excision repair

Product images:



WB Suggested Anti-RPA4 Antibody Titration: 0.2-1 ug/ml; ELISA Titer: 1: 1562500; Positive Control: Human Muscle