

Product datasheet for TA334477

Epsin 1 (EPN1) Rabbit Polyclonal Antibody

Product data:

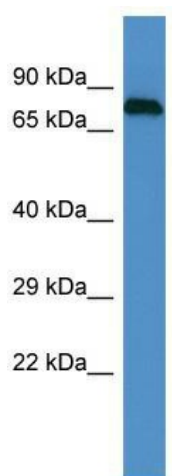
Product Type:	Primary Antibodies
Applications:	WB
Recommended Dilution:	WB
Reactivity:	Human
Host:	Rabbit
Isotype:	IgG
Clonality:	Polyclonal
Immunogen:	The immunogen for anti-EPN1 antibody is: synthetic peptide directed towards the C-terminal region of Human EPN1. Synthetic peptide located within the following region: VSRPGPTPPGAKASNPFLPGGGPATGPSVTNPFQPAPPATLTLNQLRLSP
Formulation:	Liquid. Purified antibody supplied in 1x PBS buffer with 0.09% (w/v) sodium azide and 2% sucrose. <i>Note that this product is shipped as lyophilized powder to China customers.</i>
Purification:	Affinity Purified
Conjugation:	Unconjugated
Storage:	Store at -20°C as received.
Stability:	Stable for 12 months from date of receipt.
Predicted Protein Size:	72 kDa
Gene Name:	epsin 1
Database Link:	NP_001123543 Entrez Gene 29924 Human Q9Y6I3
Background:	The protein encoded by this gene binds clathrin and is involved in the endocytosis of clathrin-coated vesicles. Three transcript variants encoding different isoforms have been found for this gene.
Synonyms:	EH domain-binding mitotic phosphoprotein; epsin 1
Note:	Immunogen Sequence Homology: Rat: 100%; Human: 100%; Mouse: 100%; Dog: 93%; Horse: 93%; Bovine: 93%; Pig: 86%; Guinea pig: 86%



[View online »](#)

Protein Pathways: Endocytosis

Product images:



Host: Rabbit; Target Name: EPN1; Sample Tissue: PANC1 Whole Cell lysates; Antibody Dilution: 1.0 ug/ml; EPN1 is supported by BioGPS gene expression data to be expressed in PANC1