

Product datasheet for **TA334476**

Epsin 1 (EPN1) Rabbit Polyclonal Antibody

Product data:

Product Type:	Primary Antibodies
Applications:	WB
Recommended Dilution:	WB
Reactivity:	Human
Host:	Rabbit
Isotype:	IgG
Clonality:	Polyclonal
Immunogen:	The immunogen for anti-EPN1 antibody: synthetic peptide directed towards the C terminal of human EPN1. Synthetic peptide located within the following region: AATPTPTPTRKTPESFLGPNAALVDLDSLVSRLPGTPPGAKASNPFLPG
Formulation:	Liquid. Purified antibody supplied in 1x PBS buffer with 0.09% (w/v) sodium azide and 2% sucrose. <i>Note that this product is shipped as lyophilized powder to China customers.</i>
Purification:	Affinity Purified
Conjugation:	Unconjugated
Storage:	Store at -20°C as received.
Stability:	Stable for 12 months from date of receipt.
Predicted Protein Size:	57 kDa
Gene Name:	epsin 1
Database Link:	NP_037465 Entrez Gene 29924 Human Q9Y6I3



[View online »](#)

Background:

EPN1 is an endocytic accessory protein that interacts with EPS15 (MIM 600051), the alpha subunit of the clathrin adaptor AP2 (AP2A1; MIM 601026), and clathrin (see MIM 118960), as well as with other accessory proteins for the endocytosis of clathrin-coated vesicles. EPN1 is an endocytic accessory protein that interacts with EPS15 (MIM 600051), the alpha subunit of the clathrin adaptor AP2 (AP2A1; MIM 601026), and clathrin (see MIM 118960), as well as with other accessory proteins for the endocytosis of clathrin-coated vesicles. [supplied by OMIM]. Publication Note: This RefSeq record includes a subset of the publications that are available for this gene. Please see the Entrez Gene record to access additional publications.
PRIMARYREFSEQ_SPAN PRIMARY_IDENTIFIER PRIMARY_SPAN COMP 1-19 AK022454.1 1-19 20-2430 BC044651.1 1-2411

Synonyms:

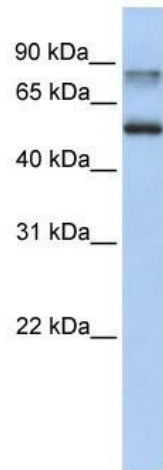
EH domain-binding mitotic phosphoprotein; epsin 1

Note:

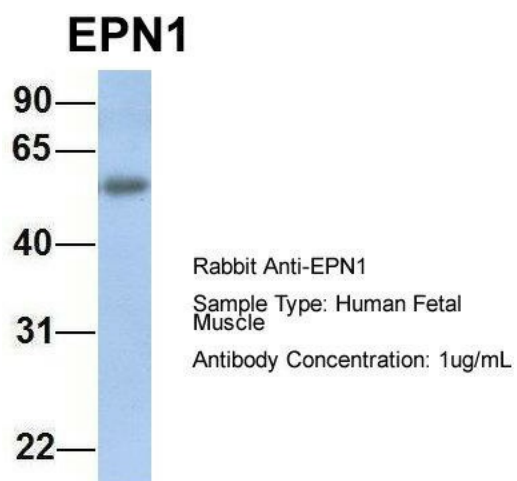
Immunogen Sequence Homology: Dog: 100%; Rat: 100%; Horse: 100%; Human: 100%; Mouse: 100%; Pig: 92%; Guinea pig: 92%; Bovine: 86%

Protein Pathways:

Endocytosis

Product images:

WB Suggested Anti-EPN1 Antibody Titration: 0.2-1 ug/ml; ELISA Titer: 1: 62500; Positive Control: Human Lung



Host: Rabbit; Target Name: EPN1; Sample Tissue: Human Fetal Muscle; Antibody Dilution: 1.0 ug/ml