

## Product datasheet for TA334475

### PYCR2 Rabbit Polyclonal Antibody

#### Product data:

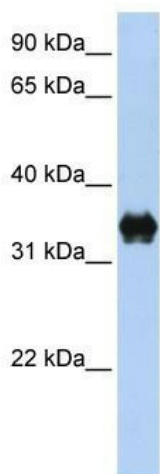
Product Type:	Primary Antibodies
Applications:	WB
Recommended Dilution:	WB
Reactivity:	Human
Host:	Rabbit
Isotype:	IgG
Clonality:	Polyclonal
Immunogen:	The immunogen for anti-PYCR2 antibody: synthetic peptide directed towards the C terminal of human PYCR2. Synthetic peptide located within the following region: LINAVEASCIRTRELQSMADQEKISPAALKKTLDRVKLESPTVSTLTPS
Formulation:	Liquid. Purified antibody supplied in 1x PBS buffer with 0.09% (w/v) sodium azide and 2% sucrose. <i>Note that this product is shipped as lyophilized powder to China customers.</i>
Purification:	Affinity Purified
Conjugation:	Unconjugated
Storage:	Store at -20°C as received.
Stability:	Stable for 12 months from date of receipt.
Predicted Protein Size:	34 kDa
Gene Name:	pyrroline-5-carboxylate reductase family member 2
Database Link:	<a href="#">NP_037460</a> <a href="#">Entrez Gene 29920 Human</a> <a href="#">Q96C36</a>
Background:	PYCR2 belongs to the pyrroline-5-carboxylate reductase family. The function of the PYCR2 protein is not known.
Synonyms:	HLD10; P5CR2
Note:	Immunogen Sequence Homology: Dog: 100%; Pig: 100%; Rat: 100%; Horse: 100%; Human: 100%; Mouse: 100%; Bovine: 100%; Rabbit: 100%; Guinea pig: 93%



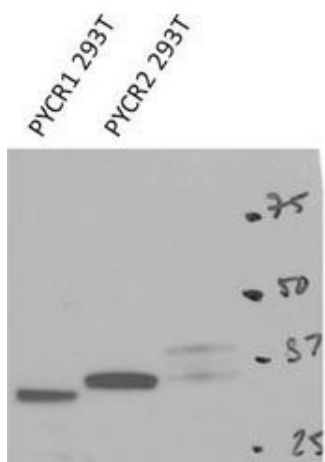
[View online »](#)

**Protein Pathways:** Arginine and proline metabolism, Metabolic pathways

**Product images:**

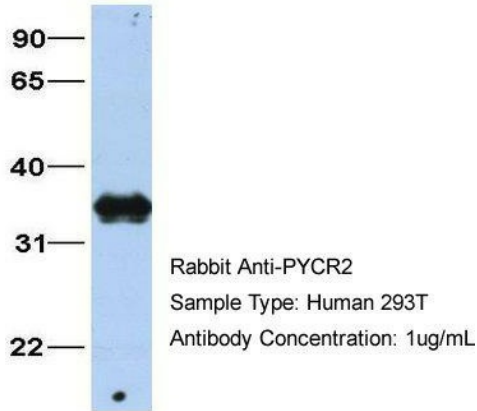


WB Suggested Anti-PYCR2 Antibody Titration: 0.2-1 ug/ml; ELISA Titer: 1: 312500; Positive Control: 293T cell lysate



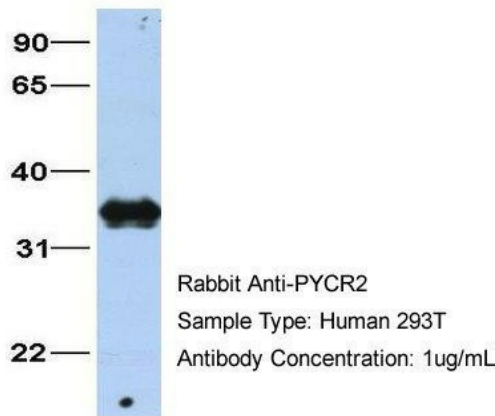
PYCR2 antibody - C-terminal region validated by WB using 293T cells lysate at 1 ug/ml.

## PYCR2



Host: Rabbit; Target Name: PYCR2; Sample Tissue: 293T; Antibody Dilution: 1.0 µg/ml

## PYCR2



Host: Rabbit; Target Name: PYCR2; Sample Tissue: 293T; Antibody Dilution: 1.0 µg/ml