

Product datasheet for **TA334474**

PYCR2 Rabbit Polyclonal Antibody

Product data:

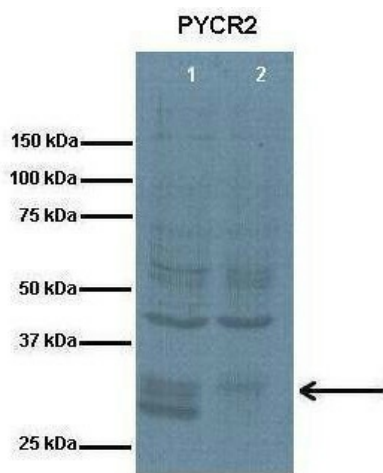
Product Type:	Primary Antibodies
Applications:	IF, WB
Recommended Dilution:	WB, IF
Reactivity:	Human
Host:	Rabbit
Isotype:	IgG
Clonality:	Polyclonal
Immunogen:	The immunogen for anti-PYCR2 antibody: synthetic peptide directed towards the middle region of human PYCR2. Synthetic peptide located within the following region: LDSEQHPCQLKDNVCSPPGATIHALHFLESGGFRSLLINAVEASCIRTRE
Formulation:	Liquid. Purified antibody supplied in 1x PBS buffer with 0.09% (w/v) sodium azide and 2% sucrose. <i>Note that this product is shipped as lyophilized powder to China customers.</i>
Purification:	Affinity Purified
Conjugation:	Unconjugated
Storage:	Store at -20°C as received.
Stability:	Stable for 12 months from date of receipt.
Predicted Protein Size:	34 kDa
Gene Name:	pyrroline-5-carboxylate reductase family member 2
Database Link:	NP_037460 Entrez Gene 29920 Human Q96C36
Background:	PYCR2 belongs to the pyrroline-5-carboxylate reductase family. The function of the PYCR2 protein is not known.
Synonyms:	HLD10; P5CR2
Note:	Immunogen Sequence Homology: Dog: 100%; Pig: 100%; Rat: 100%; Horse: 100%; Human: 100%; Mouse: 100%; Bovine: 100%; Rabbit: 100%; Zebrafish: 100%; Guinea pig: 100%



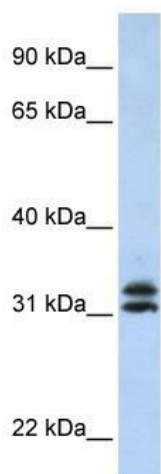
[View online »](#)

Protein Pathways: Arginine and proline metabolism, Metabolic pathways

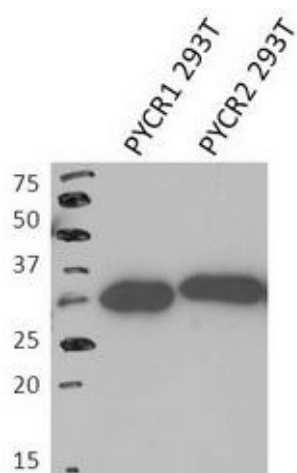
Product images:



Lanes: 1. 10 ug human fibroblast lysate; 2. 10 ug PYCR1 KO human fibroblast lysate; Primary Antibody Dilution: 1: 300; Secondary Antibody: Anti-rabbit-HRP; Secondary Antibody Dilution: 1: 1000; Gene Name: PYCR2; Submitted by: Anonymous;

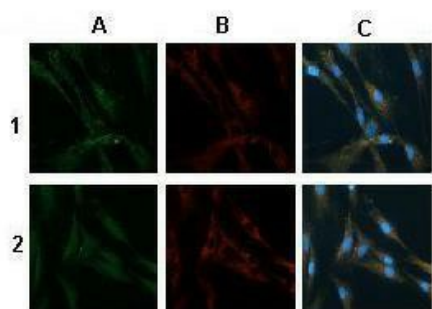


WB Suggested Anti-PYCR2 Antibody Titration: 0.2-1 ug/ml; ELISA Titer: 1: 12500; Positive Control: HepG2 cell lysate



PYCR2 antibody - middle region validated by WB using 293T cells lysate at 1 ug/ml.

PYCR2



Sample Type: 1. WT human fibroblast 2. PYCR1 KO human fibroblast Primary Antibody Dilution: 1: 250; Secondary Antibody: Anti-rabbit AlexaFluor 488; Secondary Antibody: dilution: 1: 1000; Color/Signal Descriptions: PYCR2: Green DAPI: Blue; Gene Name: PYCR2

- A. Aviva's PYCR2 antibody +anti-rabbit-Alexa Fluor 488
- B. Anti-Tom20 antibody + anti-mouse-Alexa Fluor 555
- C. Overlay (DAPI: blue)