

Product datasheet for **TA334473**

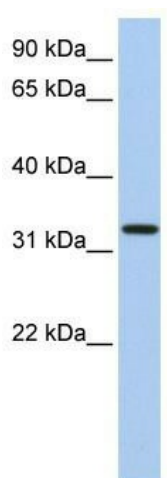
C12orf24 (FAM216A) Rabbit Polyclonal Antibody

Product data:

Product Type:	Primary Antibodies
Applications:	WB
Recommended Dilution:	WB
Reactivity:	Human
Host:	Rabbit
Isotype:	IgG
Clonality:	Polyclonal
Immunogen:	The immunogen for anti-FAM216A antibody: synthetic peptide directed towards the N terminal of human FAM216A. Synthetic peptide located within the following region: AVAGTEGGGGGSAGYSCYQNSKGSDRIKDGYKVNSHIAKLQELWKTPQNNQ
Formulation:	Liquid. Purified antibody supplied in 1x PBS buffer with 0.09% (w/v) sodium azide and 2% sucrose.
Purification:	Affinity Purified
Conjugation:	Unconjugated
Storage:	Store at -20°C as received.
Stability:	Stable for 12 months from date of receipt.
Predicted Protein Size:	31 kDa
Gene Name:	family with sequence similarity 216 member A
Database Link:	NP_037432 Entrez Gene 29902 Human Q8WUB2
Background:	The exact function of FAM216A remains unknown.
Synonyms:	C12orf24; HSU79274
Note:	Immunogen Sequence Homology: Human: 100%; Pig: 79%; Bovine: 79%



[View online »](#)

Product images:

WB Suggested Anti-FAM216A Antibody Titration:
0.2-1 ug/ml; ELISA Titer: 1: 312500; Positive
Control: Human heart