

Product datasheet for **TA334472**

DNA polymerase mu (POLM) Rabbit Polyclonal Antibody

Product data:

Product Type:	Primary Antibodies
Applications:	WB
Recommended Dilution:	WB
Reactivity:	Human
Host:	Rabbit
Isotype:	IgG
Clonality:	Polyclonal
Immunogen:	The immunogen for anti-POLM antibody: synthetic peptide directed towards the middle region of human POLM. Synthetic peptide located within the following region: LRRFSRKEKGLWLNHGLFDPEQKTFQAAASEEDIFRHLGLELYLPPEQRN
Formulation:	Liquid. Purified antibody supplied in 1x PBS buffer with 0.09% (w/v) sodium azide and 2% sucrose. <i>Note that this product is shipped as lyophilized powder to China customers.</i>
Purification:	Affinity Purified
Conjugation:	Unconjugated
Storage:	Store at -20°C as received.
Stability:	Stable for 12 months from date of receipt.
Predicted Protein Size:	55 kDa
Gene Name:	polymerase (DNA) mu
Database Link:	NP_037416 Entrez Gene 27434 Human Q9NP87
Background:	POLM seems to act as an Ig mutase which is responsible for immunoglobulin (Ig) gene hypermutation.
Synonyms:	Pol Mu; Tdt-N
Note:	Immunogen Sequence Homology: Pig: 100%; Horse: 100%; Human: 100%; Rat: 93%; Guinea pig: 93%; Dog: 92%; Mouse: 86%; Rabbit: 86%; Bovine: 79%

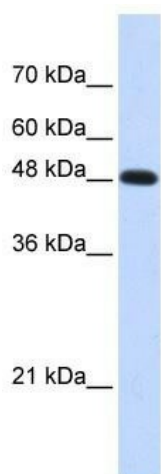


[View online »](#)

Protein Families: Druggable Genome

Protein Pathways: Non-homologous end-joining

Product images:



WB Suggested Anti-POLM Antibody Titration: 0.2-1 ug/ml; ELISA Titer: 1: 1562500; Positive Control: Transfected 293T