

Product datasheet for **TA334465**

VPS4A Rabbit Polyclonal Antibody

Product data:

Product Type:	Primary Antibodies
Applications:	WB
Recommended Dilution:	WB
Reactivity:	Human
Host:	Rabbit
Isotype:	IgG
Clonality:	Polyclonal
Immunogen:	The immunogen for anti-VPS4A antibody: synthetic peptide directed towards the N terminal of human VPS4A. Synthetic peptide located within the following region: YFLHAIKYEAHSDKAKESIRAKCVQYLDRAEKLKDYLRSEKHEHGKPKVKE
Formulation:	Liquid. Purified antibody supplied in 1x PBS buffer with 0.09% (w/v) sodium azide and 2% sucrose. <i>Note that this product is shipped as lyophilized powder to China customers.</i>
Purification:	Affinity Purified
Conjugation:	Unconjugated
Storage:	Store at -20°C as received.
Stability:	Stable for 12 months from date of receipt.
Predicted Protein Size:	49 kDa
Gene Name:	vacuolar protein sorting 4 homolog A
Database Link:	NP_037377 Entrez Gene 27183 Human Q9UN37



[View online »](#)

Background:

VPS4A is a member of the AAA protein family (ATPases associated with diverse cellular activities), and is the homolog of the yeast Vps4 protein. In humans, two paralogs of the yeast protein have been identified. Functional studies indicate that both human paralogs associate with the endosomal compartments, and are involved in intracellular protein trafficking, similar to Vps4 protein in yeast. The protein encoded by this gene is a member of the AAA protein family (ATPases associated with diverse cellular activities), and is the homolog of the yeast Vps4 protein. In humans, two paralogs of the yeast protein have been identified. The former share a high degree of aa sequence similarity with each other, and also with yeast Vps4 and mouse Skd1 proteins. The mouse Skd1 (suppressor of K⁺ transport defect 1) has been shown to be really an yeast Vps4 ortholog. Functional studies indicate that both human paralogs associate with the endosomal compartments, and are involved in intracellular protein trafficking, similar to Vps4 protein in yeast. The gene encoding this paralog has been mapped to chromosome 16; the gene for the other resides on chromosome 18. Publication Note: This RefSeq record includes a subset of the publications that are available for this gene. Please see the Entrez Gene record to access additional publications.

Synonyms:

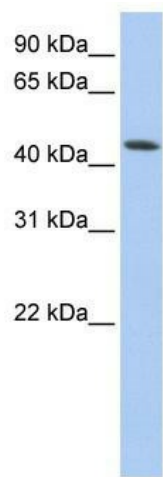
SKD1; SKD1A; SKD2; VPS4; VPS4-1

Note:

Immunogen Sequence Homology: Dog: 100%; Rat: 100%; Horse: 100%; Human: 100%; Mouse: 100%; Bovine: 100%; Rabbit: 100%; Zebrafish: 100%; Pig: 93%; Guinea pig: 93%

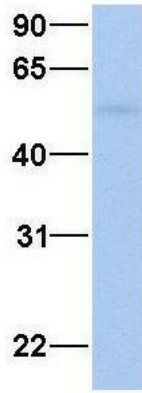
Protein Pathways:

Endocytosis

Product images:

WB Suggested Anti-VPS4A Antibody Titration: 0.2-1 ug/ml; ELISA Titer: 1: 312500; Positive Control: Human Muscle

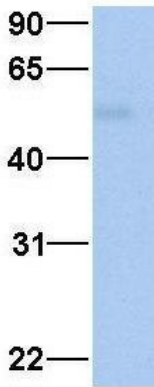
VPS4A



Rabbit Anti-VPS4A
Sample Type: Human Fetal Heart
Antibody Concentration: 1ug/mL

Host: Rabbit; Target Name: VPS4A; Sample
Tissue: Human Fetal Heart; Antibody Dilution: 1.0
ug/ml

VPS4A



Rabbit Anti-VPS4A
Sample Type: Human Fetal Lung
Antibody Concentration: 1ug/mL

Host: Rabbit; Target Name: VPS4A; Sample
Tissue: Human Fetal Lung; Antibody Dilution: 1.0
ug/ml