

Product datasheet for **TA334463**

Thioredoxin 2 (TXN2) Rabbit Polyclonal Antibody

Product data:

Product Type:	Primary Antibodies
Applications:	WB
Recommended Dilution:	WB
Reactivity:	Human
Host:	Rabbit
Isotype:	IgG
Clonality:	Polyclonal
Immunogen:	The immunogen for anti-TXN2 antibody: synthetic peptide directed towards the middle region of human TXN2. Synthetic peptide located within the following region: VDIDDHTDLAIEYEVSAVPTVLAMKNGDVVDKFKVGIKDEDQLEAFLKKLI
Formulation:	Liquid. Purified antibody supplied in 1x PBS buffer with 0.09% (w/v) sodium azide and 2% sucrose. <i>Note that this product is shipped as lyophilized powder to China customers.</i>
Purification:	Affinity Purified
Conjugation:	Unconjugated
Storage:	Store at -20°C as received.
Stability:	Stable for 12 months from date of receipt.
Predicted Protein Size:	12 kDa
Gene Name:	thioredoxin 2
Database Link:	NP_036605 Entrez Gene 25828 Human Q99757



[View online »](#)

Background:

TXN2 is a mitochondrial member of the thioredoxin family, a group of small multifunctional redox-active proteins. TXN2 may play important roles in the regulation of the mitochondrial membrane potential and in protection against oxidant-induced apoptosis. This nuclear gene encodes a mitochondrial member of the thioredoxin family, a group of small multifunctional redox-active proteins. The encoded protein may play important roles in the regulation of the mitochondrial membrane potential and in protection against oxidant-induced apoptosis. Publication Note: This RefSeq record includes a subset of the publications that are available for this gene. Please see the Entrez Gene record to access additional publications.

Synonyms:

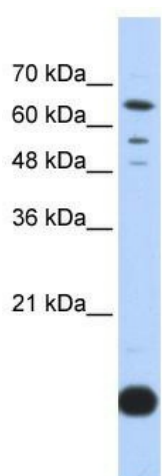
COXPD29; MT-TRX; MTRX; TRX2

Note:

Immunogen Sequence Homology: Dog: 100%; Pig: 100%; Rat: 100%; Horse: 100%; Human: 100%; Mouse: 100%; Bovine: 100%; Guinea pig: 100%; Zebrafish: 85%

Protein Families:

Druggable Genome

Product images:

WB Suggested Anti-TXN2 Antibody Titration: 0.2-1 ug/ml; ELISA Titer: 1: 312500; Positive Control: Transfected 293T