

Product datasheet for **TA334459**

IFIT5 Rabbit Polyclonal Antibody

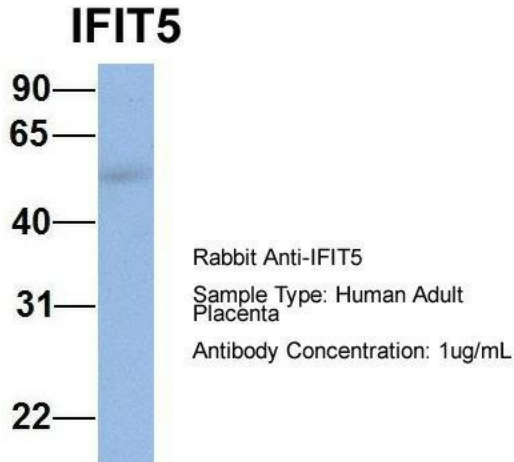
Product data:

Product Type:	Primary Antibodies
Applications:	WB
Recommended Dilution:	WB
Reactivity:	Human
Host:	Rabbit
Isotype:	IgG
Clonality:	Polyclonal
Immunogen:	The immunogen for anti-IFIT5 antibody: synthetic peptide directed towards the middle region of human IFIT5. Synthetic peptide located within the following region: ITVYRLDDSDREGSVKSFSLGPLRKAVTLNPDNSYIKVFLALKLQDVHAE
Formulation:	Liquid. Purified antibody supplied in 1x PBS buffer with 0.09% (w/v) sodium azide and 2% sucrose. <i>Note that this product is shipped as lyophilized powder to China customers.</i>
Purification:	Affinity Purified
Conjugation:	Unconjugated
Storage:	Store at -20°C as received.
Stability:	Stable for 12 months from date of receipt.
Predicted Protein Size:	56 kDa
Gene Name:	interferon induced protein with tetratricopeptide repeats 5
Database Link:	NP_036552 Entrez Gene 24138 Human Q13325
Background:	IFIT5 belongs to the IFIT family. It contains 8 TPR repeats. The exact function of IFIT5 remains unknown.
Synonyms:	ISG58; P58; RI58
Note:	Immunogen Sequence Homology: Rat: 100%; Human: 100%; Mouse: 100%; Dog: 93%; Pig: 93%; Bovine: 93%; Horse: 79%

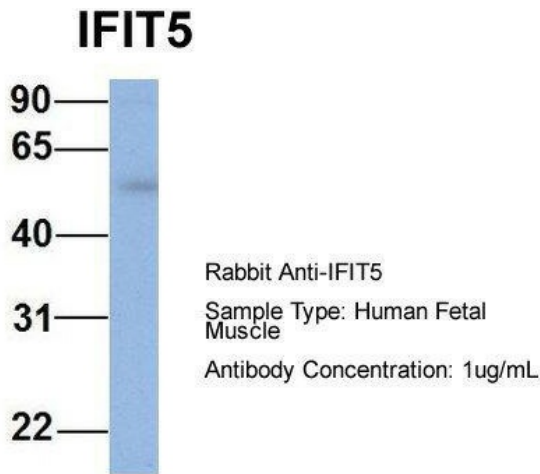


[View online »](#)

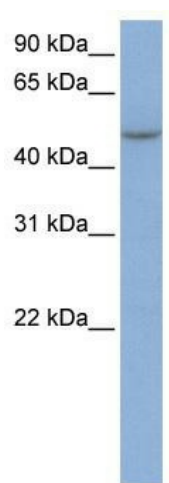
Product images:



1Hum. Adult Placenta; Host: Rabbit; Target Name: CHAD; Sample Tissue: Human Adult Placenta; Antibody Dilution: 1.0 ug/ml



Host: Rabbit; Target Name: IFIT5; Sample Tissue: Human Fetal Muscle; Antibody Dilution: 1.0 ug/ml



WB Suggested Anti-IFIT5 Antibody Titration: 0.2-1 ug/ml; ELISA Titer: 1: 312500; Positive Control: MCF7 cell lysate. IFIT5 is strongly supported by BioGPS gene expression data to be expressed in Human MCF7 cells