

## Product datasheet for **TA334457**

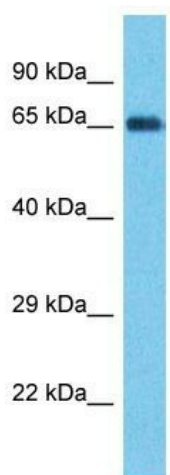
### PTPN22 Rabbit Polyclonal Antibody

#### Product data:

Product Type:	Primary Antibodies
Applications:	WB
Recommended Dilution:	WB
Reactivity:	Human
Host:	Rabbit
Isotype:	IgG
Clonality:	Polyclonal
Immunogen:	The immunogen for anti-PTPN22 antibody is: synthetic peptide directed towards the middle region of Human PTPN22. Synthetic peptide located within the following region: TAPRIDDEIPPPLPVWTPESFIVVEEAGEFSPNVPKSLSSAVKVKIGTSL
Formulation:	Liquid. Purified antibody supplied in 1x PBS buffer with 0.09% (w/v) sodium azide and 2% sucrose. <i>Note that this product is shipped as lyophilized powder to China customers.</i>
Purification:	Affinity Purified
Conjugation:	Unconjugated
Storage:	Store at -20°C as received.
Stability:	Stable for 12 months from date of receipt.
Predicted Protein Size:	61 kDa
Gene Name:	protein tyrosine phosphatase, non-receptor type 22
Database Link:	<a href="#">NP_001180360</a> <a href="#">Entrez Gene 26191 Human</a> <a href="#">Q9Y2R2</a>
Background:	The function of this protein remains unknown.
Synonyms:	LYP; LYP1; LYP2; PEP; PTPN8
Note:	Immunogen Sequence Homology: Human: 100%; Pig: 93%; Rat: 93%; Horse: 93%; Mouse: 93%; Guinea pig: 93%; Dog: 86%; Yeast: 82%; Rabbit: 79%; Zebrafish: 79%
Protein Families:	Druggable Genome, Phosphatase



[View online »](#)

**Product images:**

Host: Rabbit

Target Name: PTPN22

Sample Tissue: Thyroid Tumor Lysate

Antibody Dilution: 1.0 $\mu$ g/ml

Host: Rabbit; Target Name: PTPN22; Sample  
Tissue: Thyroid Tumor lysates; Antibody Dilution:  
1.0 ug/ml