

Product datasheet for **TA334455**

PITPNB Rabbit Polyclonal Antibody

Product data:

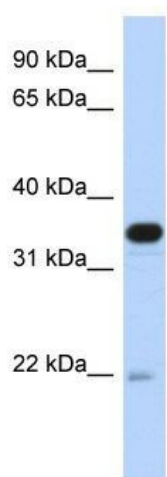
Product Type:	Primary Antibodies
Applications:	WB
Recommended Dilution:	WB
Reactivity:	Human
Host:	Rabbit
Isotype:	IgG
Clonality:	Polyclonal
Immunogen:	The immunogen for anti-PITPNB antibody: synthetic peptide directed towards the middle region of human PITPNB. Synthetic peptide located within the following region: FFIKIETWHKPDGLTLENVHGLDPNTWKTVEIVHIDIADRSQVEPADYKA
Formulation:	Liquid. Purified antibody supplied in 1x PBS buffer with 0.09% (w/v) sodium azide and 2% sucrose. <i>Note that this product is shipped as lyophilized powder to China customers.</i>
Purification:	Affinity Purified
Conjugation:	Unconjugated
Storage:	Store at -20°C as received.
Stability:	Stable for 12 months from date of receipt.
Predicted Protein Size:	31 kDa
Gene Name:	phosphatidylinositol transfer protein beta
Database Link:	NP_036531 Entrez Gene 23760 Human P48739
Background:	PITPNB is found in the cytoplasm, where it catalyzes the transfer of phosphatidylinositol and phosphatidylcholine between membranes. The protein encoded by this gene is found in the cytoplasm, where it catalyzes the transfer of phosphatidylinositol and phosphatidylcholine between membranes.
Synonyms:	PI-TP-beta; PtdInsTP; VIB1B



[View online »](#)

Note: Immunogen Sequence Homology: Dog: 100%; Pig: 100%; Rat: 100%; Horse: 100%; Human: 100%; Mouse: 100%; Bovine: 100%; Rabbit: 100%; Guinea pig: 93%

Product images:



WB Suggested Anti-PITPNB Antibody Titration:
0.2-1 ug/ml; ELISA Titer: 1: 62500; Positive
Control: Transfected 293T