

Product datasheet for **TA334452**

Pallidin (BLOC1S6) Rabbit Polyclonal Antibody

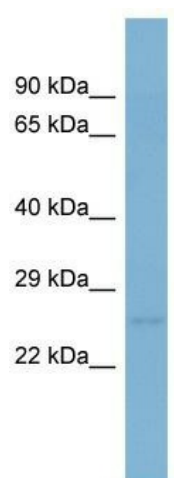
Product data:

Product Type:	Primary Antibodies
Applications:	WB
Recommended Dilution:	WB
Reactivity:	Human
Host:	Rabbit
Isotype:	IgG
Clonality:	Polyclonal
Immunogen:	The immunogen for anti-BLOC1S6 antibody: synthetic peptide directed towards the N terminal of human BLOC1S6. Synthetic peptide located within the following region: MSVPGPSSPDGALTRPPYCLEAGEPTPGLSDTSPDEGLIEDLTIEDKAVE
Formulation:	Liquid. Purified antibody supplied in 1x PBS buffer with 0.09% (w/v) sodium azide and 2% sucrose. <i>Note that this product is shipped as lyophilized powder to China customers.</i>
Purification:	Affinity Purified
Conjugation:	Unconjugated
Storage:	Store at -20°C as received.
Stability:	Stable for 12 months from date of receipt.
Predicted Protein Size:	20 kDa
Gene Name:	biogenesis of lysosomal organelles complex 1 subunit 6
Database Link:	NP_036520 Entrez Gene 26258 Human Q9UL45
Background:	BLOC1S6 may play a role in intracellular vesicle trafficking. It interacts with Syntaxin 13 which mediates intracellular membrane fusion.
Synonyms:	BLOS6; HPS9; PA; PALLID; PLDN
Note:	Immunogen Sequence Homology: Dog: 100%; Pig: 100%; Human: 100%; Mouse: 100%; Rat: 93%; Horse: 92%; Bovine: 86%; Rabbit: 85%



[View online »](#)

Product images:



WB Suggested Anti-BLOC1S6 Antibody Titration:
0.2-1 ug/ml; ELISA Titer: 1: 12500; Positive
Control: PANC1 cell lysate