

Product datasheet for **TA334451**

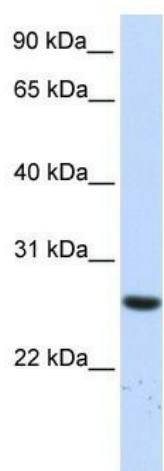
TTC33 Rabbit Polyclonal Antibody

Product data:

Product Type:	Primary Antibodies
Applications:	WB
Recommended Dilution:	WB
Reactivity:	Human
Host:	Rabbit
Isotype:	IgG
Clonality:	Polyclonal
Immunogen:	The immunogen for anti-TTC33 antibody: synthetic peptide directed towards the N terminal of human TTC33. Synthetic peptide located within the following region: DEGNWLHAIKRRKEILLEGCAEKSKQLKDEGASLAENKRYREAIQKWDEA
Formulation:	Liquid. Purified antibody supplied in 1x PBS buffer with 0.09% (w/v) sodium azide and 2% sucrose. <i>Note that this product is shipped as lyophilized powder to China customers.</i>
Purification:	Affinity Purified
Conjugation:	Unconjugated
Storage:	Store at -20°C as received.
Stability:	Stable for 12 months from date of receipt.
Predicted Protein Size:	29 kDa
Gene Name:	tetratricopeptide repeat domain 33
Database Link:	NP_036514 Entrez Gene 23548 Human Q6PID6
Background:	TTC33 contains 3 TPR repeats. The function of the TTC33 protein remains unknown.
Synonyms:	OSRF
Note:	Immunogen Sequence Homology: Dog: 100%; Human: 100%; Horse: 93%; Bovine: 93%; Rabbit: 93%; Rat: 91%; Mouse: 91%; Pig: 86%; Guinea pig: 86%; Yeast: 82%



[View online »](#)

Product images:

WB Suggested Anti-TTC33 Antibody Titration: 0.2-1 ug/ml; ELISA Titer: 1: 12500; Positive Control: Human Liver