

Product datasheet for **TA334449**

Gtpbp4 Rabbit Polyclonal Antibody

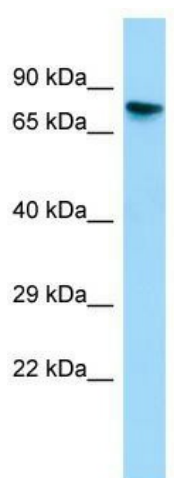
Product data:

Product Type:	Primary Antibodies
Applications:	WB
Recommended Dilution:	WB
Reactivity:	Rat
Host:	Rabbit
Isotype:	IgG
Clonality:	Polyclonal
Immunogen:	The immunogen for anti-Gtpbp4 antibody is: synthetic peptide directed towards the C-terminal region of Rat Gtpbp4. Synthetic peptide located within the following region: CSKTPRDVSGLRDVKMKVKKAKTMMKKAQKKMNRLGKKGEADRHVFDMPK
Formulation:	Liquid. Purified antibody supplied in 1x PBS buffer with 0.09% (w/v) sodium azide and 2% sucrose.
Purification:	Affinity Purified
Conjugation:	Unconjugated
Storage:	Store at -20°C as received.
Stability:	Stable for 12 months from date of receipt.
Predicted Protein Size:	69 kDa
Gene Name:	GTP binding protein 4
Database Link:	NP_446141 Entrez Gene 114300 Rat
Background:	Gtpbp4 may be involved in GTP-mediated signaling associated with cell proliferation and renal function.
Synonyms:	CRFG; FLJ10686; FLJ10690; FLJ39774; NGB; NOG1
Note:	Immunogen Sequence Homology: Dog: 100%; Pig: 100%; Rat: 100%; Human: 100%; Mouse: 100%; Bovine: 100%; Guinea pig: 100%; Horse: 93%; Rabbit: 93%; Zebrafish: 79%



[View online »](#)

Product images:



WB Suggested Anti-Gtpbp4 Antibody; Titration:
1.0 ug/ml; Positive Control: Rat Testis