

Product datasheet for **TA334447**

HA1 (ARHGAP45) Rabbit Polyclonal Antibody

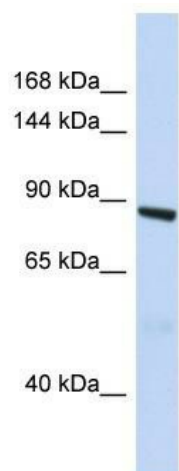
Product data:

Product Type:	Primary Antibodies
Applications:	WB
Recommended Dilution:	WB
Reactivity:	Human
Host:	Rabbit
Isotype:	IgG
Clonality:	Polyclonal
Immunogen:	The immunogen for anti-HMHA1 antibody is: synthetic peptide directed towards the N-terminal region of Human HMHA1. Synthetic peptide located within the following region: MMHMQTAPLPVHFQMLCESSKLYDPGQQYASHVRQLQRDQEPDVHYDFEP
Formulation:	Liquid. Purified antibody supplied in 1x PBS buffer with 0.09% (w/v) sodium azide and 2% sucrose. <i>Note that this product is shipped as lyophilized powder to China customers.</i>
Purification:	Affinity Purified
Conjugation:	Unconjugated
Storage:	Store at -20°C as received.
Stability:	Stable for 12 months from date of receipt.
Predicted Protein Size:	84 kDa
Gene Name:	histocompatibility (minor) HA-1
Database Link:	NP_001245257 Entrez Gene 23526 Human Q92619
Background:	The function of this protein remains unknown.
Synonyms:	HA-1; HLA-HA1; HMHA1
Note:	Immunogen Sequence Homology: Dog: 100%; Pig: 100%; Rat: 100%; Human: 100%; Mouse: 100%; Bovine: 100%; Zebrafish: 92%; Horse: 75%; Rabbit: 75%



[View online »](#)

Product images:



Host: Rabbit; Target Name: HMHA1; Sample
Tissue: Fetal Lung lysates; Antibody Dilution: 1.0
ug/ml