

## Product datasheet for **TA334446**

### Hspbp1 Rabbit Polyclonal Antibody

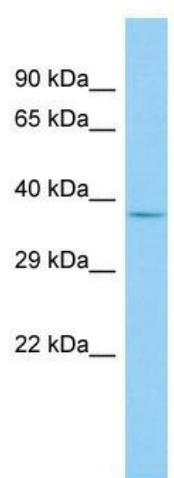
#### Product data:

Product Type:	Primary Antibodies
Applications:	WB
Recommended Dilution:	WB
Reactivity:	Rat
Host:	Rabbit
Isotype:	IgG
Clonality:	Polyclonal
Immunogen:	The immunogen for anti-Hspbp1 antibody is: synthetic peptide directed towards the C-terminal region of Rat Hspbp1. Synthetic peptide located within the following region: VLGALCSLVTFDPQGVRECREPELGLLELLRHRCQLLQQHEEYQEELEFC
Formulation:	Liquid. Purified antibody supplied in 1x PBS buffer with 0.09% (w/v) sodium azide and 2% sucrose. <i>Note that this product is shipped as lyophilized powder to China customers.</i>
Purification:	Affinity Purified
Conjugation:	Unconjugated
Storage:	Store at -20°C as received.
Stability:	Stable for 12 months from date of receipt.
Predicted Protein Size:	39 kDa
Gene Name:	HSPA (heat shock 70) binding protein, cytoplasmic cochaperone 1
Database Link:	<a href="#">NP_640354</a> <a href="#">Entrez Gene 246146 Rat</a> <a href="#">Q6IMX7</a>
Background:	Hspbp1 inhibits chaperone activity by preventing ATP binding.
Synonyms:	FES1; HSPBP; HspBP2
Note:	Immunogen Sequence Homology: Dog: 100%; Pig: 100%; Rat: 100%; Horse: 100%; Human: 100%; Mouse: 100%; Bovine: 100%; Rabbit: 100%; Guinea pig: 100%



[View online »](#)

## Product images:



Host: Rabbit; Target Name: Hspbp1; Sample  
Tissue: Rat Spleen lysates; Antibody Dilution: 1.0  
ug/ml