

Product datasheet for **TA334445**

PTGR1 Rabbit Polyclonal Antibody

Product data:

Product Type:	Primary Antibodies
Applications:	WB
Recommended Dilution:	WB
Reactivity:	Human
Host:	Rabbit
Isotype:	IgG
Clonality:	Polyclonal
Immunogen:	The immunogen for anti-PTGR1 antibody: synthetic peptide directed towards the N terminal of human PTGR1. Synthetic peptide located within the following region: VRTKTWTLKKHFVGYPTNSDFELKTSELPPLKNGEVLLEALFLTVDPYMR
Formulation:	Liquid. Purified antibody supplied in 1x PBS buffer with 0.09% (w/v) sodium azide and 2% sucrose. <i>Note that this product is shipped as lyophilized powder to China customers.</i>
Purification:	Affinity Purified
Conjugation:	Unconjugated
Storage:	Store at -20°C as received.
Stability:	Stable for 12 months from date of receipt.
Predicted Protein Size:	36 kDa
Gene Name:	prostaglandin reductase 1
Database Link:	NP_036344 Entrez Gene 22949 Human Q14914
Background:	PTGR1 functions as 15-oxo-prostaglandin 13-reductase and acts on 15-oxo-PGE1, 15-oxo-PGE2 and 15-oxo-PGE2-alpha. It has no activity towards PGE1, PGE2 and PGE2-alpha. PTGR1 catalyzes the conversion of leukotriene B4 into its biologically less active metabolite, 12-oxo-leukotriene B4. This is an initial and key step of metabolic inactivation of leukotriene B4.
Synonyms:	LTB4DH; PGR1; ZADH3

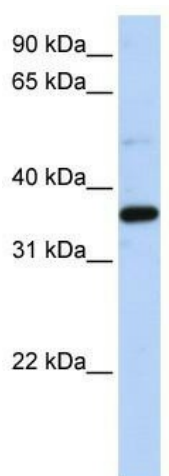


[View online »](#)

Note: Immunogen Sequence Homology: Human: 93%; Bovine: 93%; Pig: 83%; Horse: 83%; Rabbit: 83%; Guinea pig: 83%; Rat: 79%

Protein Families: Druggable Genome

Product images:



WB Suggested Anti-PTGR1 Antibody Titration: 0.2-1 ug/ml; ELISA Titer: 1: 12500; Positive Control: 293T cell lysate