

## Product datasheet for **TA334438**

### DDAH1 Rabbit Polyclonal Antibody

#### Product data:

Product Type:	Primary Antibodies
Applications:	IHC, WB
Recommended Dilution:	WB, IHC
Reactivity:	Human
Host:	Rabbit
Isotype:	IgG
Clonality:	Polyclonal
Immunogen:	The immunogen for anti-DDAH1 antibody: synthetic peptide directed towards the middle region of human DDAH1. Synthetic peptide located within the following region: ALEKLQLNIVEMKDENATLDGGDVLFTGREFFVGLSKRTNQRGAEILADT
Formulation:	Liquid. Purified antibody supplied in 1x PBS buffer with 0.09% (w/v) sodium azide and 2% sucrose. <i>Note that this product is shipped as lyophilized powder to China customers.</i>
Purification:	Affinity Purified
Conjugation:	Unconjugated
Storage:	Store at -20°C as received.
Stability:	Stable for 12 months from date of receipt.
Predicted Protein Size:	31 kDa
Gene Name:	dimethylarginine dimethylaminohydrolase 1
Database Link:	<a href="#">NP_036269</a> <a href="#">Entrez Gene 23576 Human</a> <a href="#">O94760</a>



[View online »](#)

**Background:**

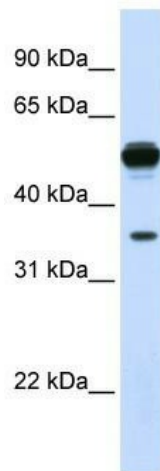
DDAH1 belongs to the dimethylarginine dimethylaminohydrolase (DDAH) family. This enzyme plays a role in nitric oxide generation by regulating cellular concentrations of methylarginines, which in turn inhibit nitric oxide synthase activity. This gene belongs to the dimethylarginine dimethylaminohydrolase (DDAH) gene family. The encoded enzyme plays a role in nitric oxide generation by regulating cellular concentrations of methylarginines, which in turn inhibit nitric oxide synthase activity. Sequence Note: AB001915.1 is a chimeric sequence. Only the DDAH1 region was propagated into this RefSeq record. [6/17/03, RefSeq staff]. Publication Note: This RefSeq record includes a subset of the publications that are available for this gene. Please see the Entrez Gene record to access additional publications.

**Synonyms:**

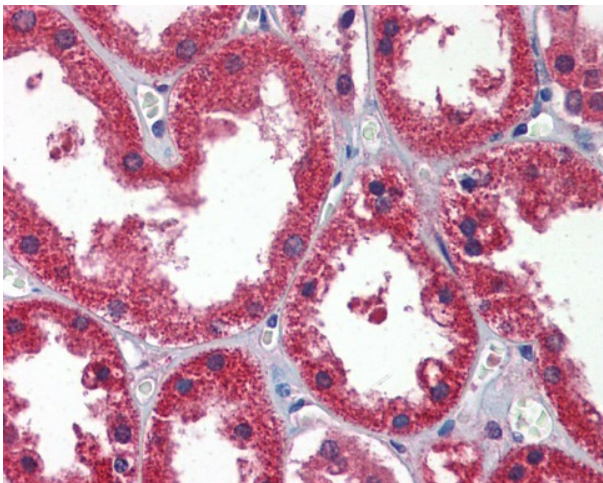
DDAH; HEL-S-16

**Note:**

Immunogen Sequence Homology: Dog: 100%; Pig: 100%; Rat: 100%; Horse: 100%; Human: 100%; Mouse: 100%; Bovine: 100%; Rabbit: 100%; Guinea pig: 100%; Zebrafish: 86%

**Product images:**

WB Suggested Anti-DDAH1 Antibody Titration:  
0.2-1 ug/ml; ELISA Titer: 1: 62500; Positive  
Control: Human Liver



Kidney