

## Product datasheet for **TA334437**

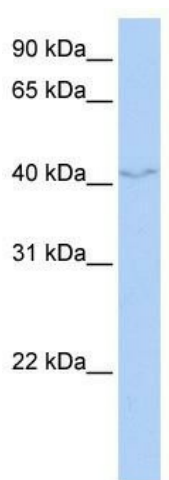
### **FAM50B Rabbit Polyclonal Antibody**

#### **Product data:**

Product Type:	Primary Antibodies
Applications:	WB
Recommended Dilution:	WB
Reactivity:	Human
Host:	Rabbit
Isotype:	IgG
Clonality:	Polyclonal
Immunogen:	The immunogen for anti-FAM50B antibody: synthetic peptide directed towards the N terminal of human FAM50B. Synthetic peptide located within the following region: EQRRERKRKISCLSFLDLDLDDQADAAEARRAGNLGKNPDVDTSFPLPDRD
Formulation:	Liquid. Purified antibody supplied in 1x PBS buffer with 0.09% (w/v) sodium azide and 2% sucrose. <i>Note that this product is shipped as lyophilized powder to China customers.</i>
Purification:	Affinity Purified
Conjugation:	Unconjugated
Storage:	Store at -20°C as received.
Stability:	Stable for 12 months from date of receipt.
Predicted Protein Size:	39 kDa
Gene Name:	family with sequence similarity 50 member B
Database Link:	<a href="#">NP_036267</a> <a href="#">Entrez Gene 26240 Human</a> <a href="#">Q9Y247</a>
Background:	The exact function of FAM50B remains unknown.
Synonyms:	D6S2654E; X5L
Note:	Immunogen Sequence Homology: Human: 100%



[View online »](#)

**Product images:**

WB Suggested Anti-FAM50B Antibody Titration:  
0.2-1 ug/ml; ELISA Titer: 1: 12500; Positive  
Control: 721\_B cell lysate