

Product datasheet for **TA334436**

FAM50B Rabbit Polyclonal Antibody

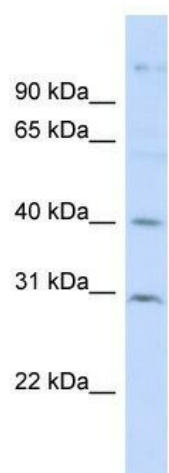
Product data:

Product Type:	Primary Antibodies
Applications:	WB
Recommended Dilution:	WB
Reactivity:	Human
Host:	Rabbit
Isotype:	IgG
Clonality:	Polyclonal
Immunogen:	The immunogen for anti-FAM50B antibody: synthetic peptide directed towards the N terminal of human FAM50B. Synthetic peptide located within the following region: IAEETILKSQVDKRFSAHYDAVEAEELKSSTVGLVTLNDMKARQEALVRER
Formulation:	Liquid. Purified antibody supplied in 1x PBS buffer with 0.09% (w/v) sodium azide and 2% sucrose. <i>Note that this product is shipped as lyophilized powder to China customers.</i>
Purification:	Affinity Purified
Conjugation:	Unconjugated
Storage:	Store at -20°C as received.
Stability:	Stable for 12 months from date of receipt.
Predicted Protein Size:	39 kDa
Gene Name:	family with sequence similarity 50 member B
Database Link:	NP_036267 Entrez Gene 26240 Human Q9Y247
Background:	The exact function of FAM50B remains unknown.
Synonyms:	D6S2654E; X5L
Note:	Immunogen Sequence Homology: Human: 100%; Pig: 86%; Rat: 86%; Mouse: 86%; Guinea pig: 86%; Dog: 79%; Horse: 79%; Bovine: 79%; Rabbit: 79%; Zebrafish: 79%



[View online »](#)

Product images:



WB Suggested Anti-FAM50B Antibody Titration:
0.2-1 ug/ml; ELISA Titer: 1: 12500; Positive
Control: HepG2 cell lysate