

Product datasheet for **TA334435**

LMOD1 Rabbit Polyclonal Antibody

Product data:

Product Type:	Primary Antibodies
Applications:	WB
Recommended Dilution:	WB
Reactivity:	Human
Host:	Rabbit
Isotype:	IgG
Clonality:	Polyclonal
Immunogen:	The immunogen for anti-LMOD1 antibody: synthetic peptide directed towards the N terminal of human LMOD1. Synthetic peptide located within the following region: SRVAKYRRQVSEDPDIDSLLLETLSPEEMEELEKELDVVDPDGSVPVGLRQ
Formulation:	Liquid. Purified antibody supplied in 1x PBS buffer with 0.09% (w/v) sodium azide and 2% sucrose. <i>Note that this product is shipped as lyophilized powder to China customers.</i>
Purification:	Affinity Purified
Conjugation:	Unconjugated
Storage:	Store at -20°C as received.
Stability:	Stable for 12 months from date of receipt.
Predicted Protein Size:	67 kDa
Gene Name:	leiomodin 1
Database Link:	NP_036266 Entrez Gene 25802 Human P29536



[View online »](#)

Background:

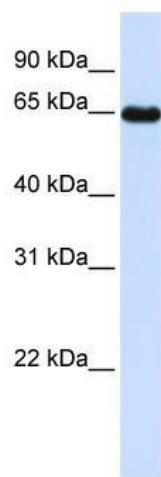
The leiomodins 1 protein (LMOD1) has a putative membrane-spanning region and 2 types of tandemly repeated blocks. The transcript is expressed in all tissues tested, with the highest levels in thyroid, eye muscle, skeletal muscle, and ovary. Increased expression of leiomodins 1 may be linked to Graves' disease and thyroid-associated ophthalmopathy. The leiomodins 1 protein has a putative membrane-spanning region and 2 types of tandemly repeated blocks. The transcript is expressed in all tissues tested, with the highest levels in thyroid, eye muscle, skeletal muscle, and ovary. Increased expression of leiomodins 1 may be linked to Graves' disease and thyroid-associated ophthalmopathy.

Synonyms:

1D; 64kD; D1; SM-LMOD; SMLMOD

Note:

Immunogen Sequence Homology: Dog: 100%; Pig: 100%; Rat: 100%; Horse: 100%; Human: 100%; Mouse: 100%; Bovine: 100%; Rabbit: 100%; Guinea pig: 100%; Zebrafish: 82%

Product images:

WB Suggested Anti-LMOD1 Antibody Titration:
0.2-1 ug/ml; ELISA Titer: 1: 62500; Positive
Control: Human Placenta