

## Product datasheet for **TA334434**

### COPG2 Rabbit Polyclonal Antibody

#### Product data:

Product Type:	Primary Antibodies
Applications:	WB
Recommended Dilution:	WB
Reactivity:	Human
Host:	Rabbit
Isotype:	IgG
Clonality:	Polyclonal
Immunogen:	The immunogen for anti-COPG2 antibody: synthetic peptide directed towards the N terminal of human COPG2. Synthetic peptide located within the following region: MIKKFDKKDEESGSGSNPFQHLEKSAVLQEARIFNETPINPRRCLHILTK
Formulation:	Liquid. Purified antibody supplied in 1x PBS buffer with 0.09% (w/v) sodium azide and 2% sucrose. <i>Note that this product is shipped as lyophilized powder to China customers.</i>
Purification:	Affinity Purified
Conjugation:	Unconjugated
Storage:	Store at -20°C as received.
Stability:	Stable for 12 months from date of receipt.
Predicted Protein Size:	97 kDa
Gene Name:	coatomer protein complex subunit gamma 2
Database Link:	<a href="#">NP_036265</a> <a href="#">Entrez Gene 26958 Human</a> <a href="#">Q9UBF2</a>



[View online »](#)

**Background:**

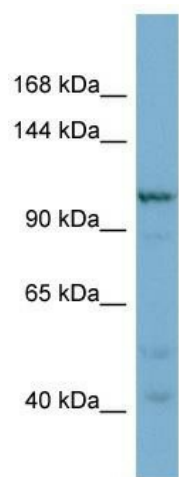
The coatamer is a cytosolic protein complex that binds to dilysine motifs and reversibly associates with Golgi non-clathrin-coated vesicles, which further mediate biosynthetic protein transport from the ER, via the Golgi up to the trans Golgi network. Coatamer complex is required for budding from Golgi membranes, and is essential for the retrograde Golgi-to-ER transport of dilysine-tagged proteins. In mammals, the coatamer can only be recruited by membranes associated to ADP-ribosylation factors (ARFs), which are small GTP-binding proteins; the complex also influences the Golgi structural integrity, as well as the processing, activity, and endocytic recycling of LDL receptors.

**Synonyms:**

2-COP; gamma-2-COP

**Note:**

Immunogen Sequence Homology: Pig: 100%; Rat: 100%; Human: 100%; Mouse: 100%; Rabbit: 100%; Zebrafish: 100%; Guinea pig: 100%; Dog: 93%; Horse: 93%; Bovine: 93%

**Product images:**

WB Suggested Anti-COPG2 Antibody Titration:  
0.2-1 ug/ml; ELISA Titer: 1: 12500; Positive  
Control: OVCAR-3 cell lysate