

## Product datasheet for **TA334432**

### **MTO1 Rabbit Polyclonal Antibody**

#### **Product data:**

Product Type:	Primary Antibodies
Applications:	WB
Recommended Dilution:	WB
Reactivity:	Human
Host:	Rabbit
Isotype:	IgG
Clonality:	Polyclonal
Immunogen:	The immunogen for anti-MTO1 antibody: synthetic peptide directed towards the N terminal of human MTO1. Synthetic peptide located within the following region: STVYAESVILTTGTFLRGMIVIGLETHPAGRLGDQPSIGLAQTLEKLGTV
Formulation:	Liquid. Purified antibody supplied in 1x PBS buffer with 0.09% (w/v) sodium azide and 2% sucrose.
Purification:	Affinity Purified
Conjugation:	Unconjugated
Storage:	Store at -20°C as received.
Stability:	Stable for 12 months from date of receipt.
Predicted Protein Size:	81 kDa
Gene Name:	mitochondrial tRNA translation optimization 1
Database Link:	<a href="#">NP_001116698</a> <a href="#">Entrez Gene 25821 Human</a> <a href="#">Q9Y2Z2</a>



[View online »](#)

**Background:**

MTO1 is a mitochondrial protein thought to be involved in mitochondrial tRNA modification. It may also play a role in the expression of the non-syndromic and aminoglycoside-induced deafness phenotypes associated with a specific mutation in the mitochondrial 12S rRNA gene. This gene encodes a mitochondrial protein thought to be involved in mitochondrial tRNA modification. The encoded protein may also play a role in the expression of the non-syndromic and aminoglycoside-induced deafness phenotypes associated with a specific mutation in the mitochondrial 12S rRNA gene. Multiple transcript variants encoding different isoforms have been found for this gene.

**Synonyms:**

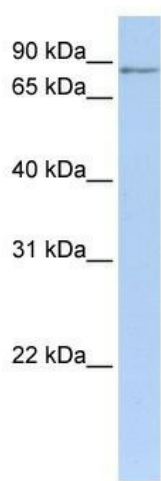
CGI-02; COXPD10

**Note:**

Immunogen Sequence Homology: Pig: 100%; Rat: 100%; Human: 100%; Dog: 93%; Horse: 93%; Mouse: 93%; Rabbit: 93%; Guinea pig: 93%; Bovine: 92%

**Protein Families:**

Druggable Genome

**Product images:**


WB Suggested Anti-MTO1 Antibody Titration: 0.2-1 ug/ml; ELISA Titer: 1: 62500; Positive Control: Human Muscle