

Product datasheet for **TA334431**

CDC42EP4 Rabbit Polyclonal Antibody

Product data:

Product Type:	Primary Antibodies
Applications:	WB
Recommended Dilution:	WB
Reactivity:	Human
Host:	Rabbit
Isotype:	IgG
Clonality:	Polyclonal
Immunogen:	The immunogen for anti-CDC42EP4 antibody: synthetic peptide directed towards the N terminal of human CDC42EP4. Synthetic peptide located within the following region: SSSKRSLLSRKFRGSKRSQSVTRGEREQRDMLGSLRDSALFVKNAMSLPQ
Formulation:	Liquid. Purified antibody supplied in 1x PBS buffer with 0.09% (w/v) sodium azide and 2% sucrose. <i>Note that this product is shipped as lyophilized powder to China customers.</i>
Purification:	Affinity Purified
Conjugation:	Unconjugated
Storage:	Store at -20°C as received.
Stability:	Stable for 12 months from date of receipt.
Predicted Protein Size:	38 kDa
Gene Name:	CDC42 effector protein 4
Database Link:	NP_036253 Entrez Gene 23580 Human Q9H3Q1



[View online »](#)

Background:

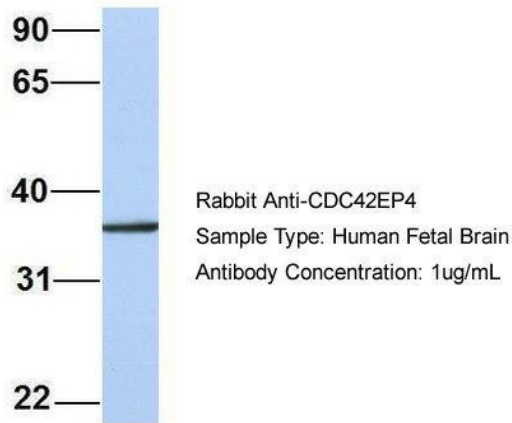
CDC42EP4 is a member of the CDC42-binding protein family. Members of this family interact with Rho family GTPases and regulate the organization of the actin cytoskeleton. The protein has been shown to bind both CDC42 and TC10 GTPases in a GTP-dependent manner. When overexpressed in fibroblasts, the protein was able to induce pseudopodia formation, which suggested a role in inducing actin filament assembly and cell shape control. The product of this gene is a member of the CDC42-binding protein family. Members of this family interact with Rho family GTPases and regulate the organization of the actin cytoskeleton. This protein has been shown to bind both CDC42 and TC10 GTPases in a GTP-dependent manner. When overexpressed in fibroblasts, this protein was able to induce pseudopodia formation, which suggested a role in inducing actin filament assembly and cell shape control.

Synonyms:

BORG4; CEP4; KAIA1777

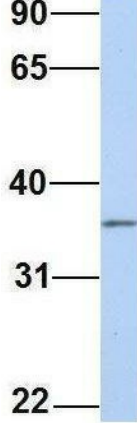
Note:

Immunogen Sequence Homology: Dog: 100%; Pig: 100%; Rat: 100%; Horse: 100%; Human: 100%; Mouse: 100%; Bovine: 100%; Rabbit: 100%; Guinea pig: 100%

Product images:
CDC42EP4


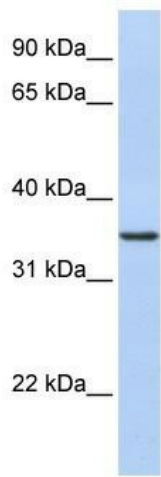
Host: Rabbit; Target Name: CDC42EP4; Sample Tissue: Human Fetal Brain; Antibody Dilution: 1.0 ug/ml

CDC42EP4



Rabbit Anti-CDC42EP4
 Sample Type: Human HeLa
 Antibody Concentration: 1ug/mL

Host: Rabbit; Target Name: CDC42EP4; Sample Tissue: HeLa; Antibody Dilution: 1.0 ug/ml; CDC42EP4 is strongly supported by BioGPS gene expression data to be expressed in Human HeLa cells



WB Suggested Anti-CDC42EP4 Antibody Titration: 0.2-1 ug/ml; ELISA Titer: 1: 62500; Positive Control: 721_B cell lysate There is BioGPS gene expression data showing that CDC42EP4 is expressed in 721_B