

## Product datasheet for **TA334430**

### ANGPTL2 Rabbit Polyclonal Antibody

#### Product data:

Product Type:	Primary Antibodies
Applications:	WB
Recommended Dilution:	WB
Reactivity:	Human
Host:	Rabbit
Isotype:	IgG
Clonality:	Polyclonal
Immunogen:	The immunogen for anti-ANGPTL2 antibody: synthetic peptide directed towards the N terminal of human ANGPTL2. Synthetic peptide located within the following region: NSKEPEVLLENRVHKQELELLNELLKQKRQIETLQQLVEVDGGIVSEVK
Formulation:	Liquid. Purified antibody supplied in 1x PBS buffer with 0.09% (w/v) sodium azide and 2% sucrose. <i>Note that this product is shipped as lyophilized powder to China customers.</i>
Purification:	Affinity Purified
Conjugation:	Unconjugated
Storage:	Store at -20°C as received.
Stability:	Stable for 12 months from date of receipt.
Predicted Protein Size:	57 kDa
Gene Name:	angiopoietin like 2
Database Link:	<a href="#">NP_036230</a> <a href="#">Entrez Gene 23452 Human</a> <a href="#">Q9UKU9</a>



[View online »](#)

**Background:**

Angiopoietins are members of the vascular endothelial growth factor family and the only known growth factors largely specific for vascular endothelium. Angiopoietin-1, angiopoietin-2, and angiopoietin-4 participate in the formation of blood vessels. ANGPTL2 is a secreted glycoprotein with homology to the angiopoietins and may exert a function on endothelial cells through autocrine or paracrine action. Angiopoietins are members of the vascular endothelial growth factor family and the only known growth factors largely specific for vascular endothelium. Angiopoietin-1, angiopoietin-2, and angiopoietin-4 participate in the formation of blood vessels. ANGPTL2 protein is a secreted glycoprotein with homology to the angiopoietins and may exert a function on endothelial cells through autocrine or paracrine action. PRIMARYREFSEQ\_SPAN PRIMARY\_IDENTIFIER PRIMARY\_SPAN COMP 1-127 AL598400.1 2-128 128-451 AL598400.1 129-452 452-2289 BC012368.1 325-2162 2290-3572 AK074726.1 1294-2576

**Synonyms:**

ARP2; HARP

**Note:**

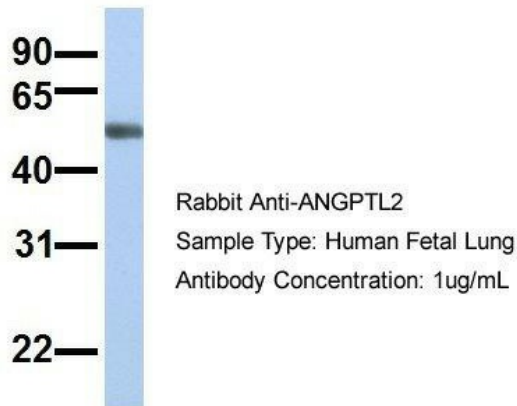
Immunogen Sequence Homology: Dog: 100%; Pig: 100%; Rat: 100%; Horse: 100%; Human: 100%; Mouse: 100%; Bovine: 100%; Rabbit: 100%; Zebrafish: 100%; Guinea pig: 100%

**Protein Families:**

Druggable Genome, ES Cell Differentiation/IPS, Secreted Protein

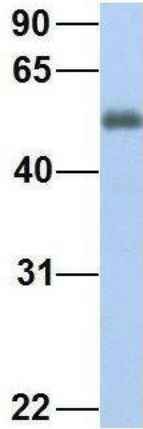
**Product images:**

## ANGPTL2



1Hum. Fetal Lung; Host: Rabbit; Target Name: SLC13A3; Sample Tissue: Human Fetal Lung; Antibody Dilution: 1.0 ug/ml

## ANGPTL2



Rabbit Anti-ANGPTL2  
Sample Type: Human Fetal Heart  
Antibody Concentration: 1ug/mL

2Hum. Fetal Heart; Host: Rabbit; Target Name:  
GNAS; Sample Tissue: Human Fetal Heart;  
Antibody Dilution: 1.0 ug/ml



WB Suggested Anti-ANGPTL2 Antibody Titration:  
0.2-1 ug/ml; ELISA Titer: 1: 12500; Positive  
Control: 721\_B cell lysate There is BioGPS gene  
expression data showing that ANGPTL2 is  
expressed in 721\_B