

Product datasheet for **TA334427**

GLUD2 Rabbit Polyclonal Antibody

Product data:

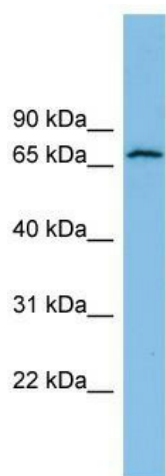
Product Type:	Primary Antibodies
Applications:	WB
Recommended Dilution:	WB
Reactivity:	Human
Host:	Rabbit
Isotype:	IgG
Clonality:	Polyclonal
Immunogen:	The immunogen for anti-GLUD2 antibody: synthetic peptide directed towards the N terminal of human GLUD2. Synthetic peptide located within the following region: EGFFDRGASIVEDKLVKDLRTQESEEQKRNRVRGILRIIKPCNHVLSLSF
Formulation:	Liquid. Purified antibody supplied in 1x PBS buffer with 0.09% (w/v) sodium azide and 2% sucrose. <i>Note that this product is shipped as lyophilized powder to China customers.</i>
Purification:	Affinity Purified
Conjugation:	Unconjugated
Storage:	Store at -20°C as received.
Stability:	Stable for 12 months from date of receipt.
Predicted Protein Size:	61 kDa
Gene Name:	glutamate dehydrogenase 2
Database Link:	NP_036216 Entrez Gene 2747 Human P49448
Background:	Glutamate dehydrogenase (EC 1.4.1.3) catalyzes the reversible oxidative deamination of glutamate to alpha-ketoglutarate using NAD and/or NADP as cofactors.
Synonyms:	GDH2; GLUDP1
Note:	Immunogen Sequence Homology: Human: 100%; Rat: 92%; Dog: 85%; Pig: 85%; Horse: 85%; Mouse: 85%; Sheep: 77%; Bovine: 77%



[View online »](#)

Protein Pathways: Alanine, aspartate and glutamate metabolism, Arginine and proline metabolism, D-Glutamine and D-glutamate metabolism, Metabolic pathways, Nitrogen metabolism

Product images:



WB Suggested Anti-GLUD2 Antibody Titration:
0.2-1 ug/ml; ELISA Titer: 1: 312500; Positive
Control: RPMI 8226 cell lysate