

## Product datasheet for **TA334424**

### TCP1 epsilon (CCT5) Rabbit Polyclonal Antibody

#### Product data:

Product Type:	Primary Antibodies
Applications:	WB
Recommended Dilution:	WB
Reactivity:	Human, Mouse, Rat
Host:	Rabbit
Isotype:	IgG
Clonality:	Polyclonal
Immunogen:	The immunogen for anti-CCT5 antibody: synthetic peptide directed towards the N terminal of human CCT5. Synthetic peptide located within the following region: NDGATILSMMDVDHQIAKLMVELSKSQDDEIGDGTGTVVVLGALLEEAE
Formulation:	Liquid. Purified antibody supplied in 1x PBS buffer with 0.09% (w/v) sodium azide and 2% sucrose. <i>Note that this product is shipped as lyophilized powder to China customers.</i>
Purification:	Affinity Purified
Conjugation:	Unconjugated
Storage:	Store at -20°C as received.
Stability:	Stable for 12 months from date of receipt.
Predicted Protein Size:	60 kDa
Gene Name:	chaperonin containing TCP1 subunit 5
Database Link:	<a href="#">NP_036205</a> <a href="#">Entrez Gene 12465 Mouse</a> <a href="#">Entrez Gene 294864 Rat</a> <a href="#">Entrez Gene 22948 Human</a> <a href="#">P48643</a>



[View online »](#)

**Background:**

CCT5 is a molecular chaperone that is member of the chaperonin containing TCP1 complex (CCT), also known as the TCP1 ring complex (TRiC). This complex consists of two identical stacked rings, each containing eight different proteins. Unfolded polypeptides enter the central cavity of the complex and are folded in an ATP-dependent manner. The complex folds various proteins, including actin and tubulin. Alternate transcriptional splice variants of this gene have been observed but have not been thoroughly characterized. This gene encodes a molecular chaperone that is member of the chaperonin containing TCP1 complex (CCT), also known as the TCP1 ring complex (TRiC). This complex consists of two identical stacked rings, each containing eight different proteins. Unfolded polypeptides enter the central cavity of the complex and are folded in an ATP-dependent manner. The complex folds various proteins, including actin and tubulin. Alternate transcriptional splice variants of this gene have been observed but have not been thoroughly characterized. Publication Note: This RefSeq record includes a subset of the publications that are available for this gene. Please see the Entrez Gene record to access additional publications.

**Synonyms:**

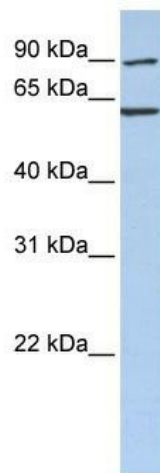
CCT-epsilon; CCTE; HEL-S-69; PNAS-102; TCP-1-epsilon

**Note:**

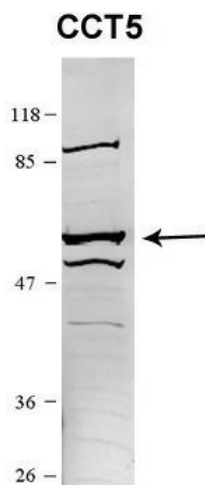
Immunogen Sequence Homology: Dog: 100%; Pig: 100%; Rat: 100%; Horse: 100%; Human: 100%; Mouse: 100%; Yeast: 100%; Bovine: 100%; Rabbit: 100%; Zebrafish: 100%; Guinea pig: 100%

**Protein Families:**

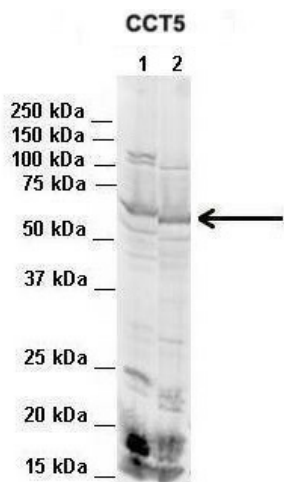
Druggable Genome

**Product images:**

WB Suggested Anti-CCT5 Antibody Titration: 0.2-1 ug/ml; ELISA Titer: 1: 12500; Positive Control: Human brain



Researcher: Dr. Yuzhi Chen, University of Arkansas for Medical Science; Application: Western blotting; Species+tissue/cell type: Mouse WT brain and Rat brain; How many ug's of tissue/cell lysate run on the gel: 1. Mouse WT brain extract (80ug) 2. Rat brain



Lanes: 1. Mouse WT brain extract (80ug) 2. Rat brain extract (80ug); Primary Antibody Dilution: 2 ug/ml; Secondary Antibody: IRDye 800CW goat anti-rabbit from Li-COR Bioscience; Secondary Antibody Dilution: 1: 20, 000; Gene Name: CCT5; Submitted by: Dr. Y