

Product datasheet for **TA334418**

G protein alpha 12 (GNA12) Rabbit Polyclonal Antibody

Product data:

Product Type:	Primary Antibodies
Applications:	WB
Recommended Dilution:	WB
Reactivity:	Human
Host:	Rabbit
Isotype:	IgG
Clonality:	Polyclonal
Immunogen:	The immunogen for anti-GNA12 antibody: synthetic peptide directed towards the middle region of human GNA12. Synthetic peptide located within the following region: TFQLYVPALSALWRDSGIREAFSRSEFQLGESVKYFLDNLDLRIGQLNYF
Formulation:	Liquid. Purified antibody supplied in 1x PBS buffer with 0.09% (w/v) sodium azide and 2% sucrose. <i>Note that this product is shipped as lyophilized powder to China customers.</i>
Purification:	Affinity Purified
Conjugation:	Unconjugated
Storage:	Store at -20°C as received.
Stability:	Stable for 12 months from date of receipt.
Predicted Protein Size:	44 kDa
Gene Name:	G protein subunit alpha 12
Database Link:	NP_031379 Entrez Gene 2768 Human Q03113
Background:	GNA12 belongs to the G-alpha family. G(12) subfamily. Guanine nucleotide-binding proteins (G proteins) are involved as modulators or transducers in various transmembrane signaling systems.
Synonyms:	gep; NNX3; RMP
Note:	Immunogen Sequence Homology: Dog: 100%; Pig: 100%; Rat: 100%; Horse: 100%; Human: 100%; Mouse: 100%; Bovine: 100%; Rabbit: 100%; Guinea pig: 100%; Zebrafish: 79%

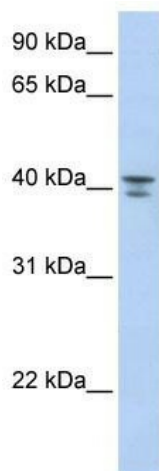


[View online »](#)

Protein Families: Druggable Genome

Protein Pathways: Long-term depression, MAPK signaling pathway, Regulation of actin cytoskeleton, Vascular smooth muscle contraction

Product images:



WB Suggested Anti-GNA12 Antibody Titration:
0.2-1 ug/ml; ELISA Titer: 1: 312500; Positive
Control: Human Liver