

Product datasheet for **TA334417**

Cela3b Rabbit Polyclonal Antibody

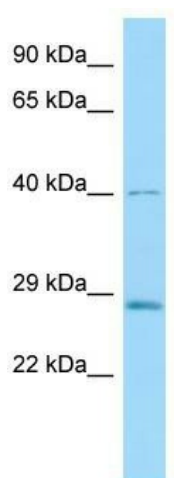
Product data:

Product Type:	Primary Antibodies
Applications:	WB
Recommended Dilution:	WB
Reactivity:	Rat
Host:	Rabbit
Isotype:	IgG
Clonality:	Polyclonal
Immunogen:	The immunogen for anti-Cela3b antibody is: synthetic peptide directed towards the middle region of Rat Cela3b. Synthetic peptide located within the following region: PNGAPCYISGWGRLSTNGPLPDKLQQALLPVVDYAHCSKWDWWGFSVKKT
Formulation:	Liquid. Purified antibody supplied in 1x PBS buffer with 0.09% (w/v) sodium azide and 2% sucrose.
Purification:	Affinity Purified
Conjugation:	Unconjugated
Storage:	Store at -20°C as received.
Stability:	Stable for 12 months from date of receipt.
Predicted Protein Size:	29 kDa
Gene Name:	chymotrypsin-like elastase family, member 3B
Database Link:	NP_001100162 Entrez Gene 298567 Rat
Background:	The function of this protein remains unknown.
Synonyms:	CBPP; E1; EL-1; ELA3B; Elastase-3B
Note:	Immunogen Sequence Homology: Horse: 100%; Human: 100%; Bovine: 100%; Rabbit: 100%; Dog: 93%; Mouse: 93%; Pig: 92%; Rat: 92%; Guinea pig: 92%; Zebrafish: 83%



[View online »](#)

Product images:



Host: Rabbit; Target Name: Cela3b; Sample
Tissue: Rat Pancreas lysates; Antibody Dilution:
1.0 ug/ml