

Product datasheet for **TA334415**

PHLDA1 Rabbit Polyclonal Antibody

Product data:

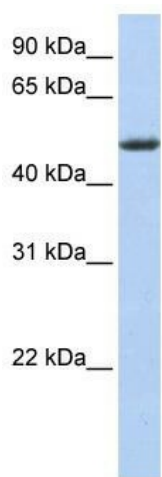
Product Type:	Primary Antibodies
Applications:	WB
Recommended Dilution:	WB
Reactivity:	Human
Host:	Rabbit
Isotype:	IgG
Clonality:	Polyclonal
Immunogen:	The immunogen for anti-PHLDA1 antibody: synthetic peptide directed towards the middle region of human PHLDA1. Synthetic peptide located within the following region: PAVASLEPPVKLKLHFSNMKTVDCVERKGGKMYFTVMAEGKEIDFRCP
Formulation:	Liquid. Purified antibody supplied in 1x PBS buffer with 0.09% (w/v) sodium azide and 2% sucrose. <i>Note that this product is shipped as lyophilized powder to China customers.</i>
Purification:	Affinity Purified
Conjugation:	Unconjugated
Storage:	Store at -20°C as received.
Stability:	Stable for 12 months from date of receipt.
Predicted Protein Size:	45 kDa
Gene Name:	pleckstrin homology like domain family A member 1
Database Link:	NP_031376 Entrez Gene 22822 Human Q8WW24
Background:	PHLDA1 is an evolutionarily conserved proline-histidine rich nuclear protein. It may play an important role in the anti-apoptotic effects of insulin-like growth factor-1. This gene encodes an evolutionarily conserved proline-histidine rich nuclear protein. The encoded protein may play an important role in the anti-apoptotic effects of insulin-like growth factor-1.
Synonyms:	DT1P1B11; PHRIP; TDAG51



[View online »](#)

Note: Immunogen Sequence Homology: Pig: 100%; Rat: 100%; Horse: 100%; Human: 100%; Mouse: 100%; Bovine: 100%; Rabbit: 100%; Guinea pig: 100%; Dog: 93%

Product images:



WB Suggested Anti-PHLDA1 Antibody Titration:
0.2-1 ug/ml; ELISA Titer: 1: 62500; Positive
Control: Human Placenta