

Product datasheet for **TA334414**

CENPI Rabbit Polyclonal Antibody

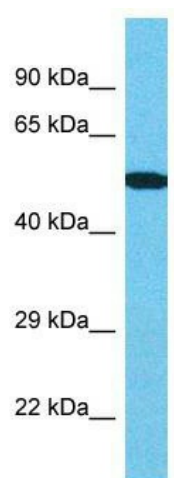
Product data:

Product Type:	Primary Antibodies
Applications:	WB
Recommended Dilution:	WB
Reactivity:	Human
Host:	Rabbit
Isotype:	IgG
Clonality:	Polyclonal
Immunogen:	The immunogen for anti-CENPI antibody is: synthetic peptide directed towards the N-terminal region of Human CENPI. Synthetic peptide located within the following region: SKNISKHGGQNNPVGDIYEHADDQAEEDALQMAVGYFEKGPIKASQNKDKTL
Formulation:	Liquid. Purified antibody supplied in 1x PBS buffer with 0.09% (w/v) sodium azide and 2% sucrose. <i>Note that this product is shipped as lyophilized powder to China customers.</i>
Purification:	Affinity Purified
Conjugation:	Unconjugated
Storage:	Store at -20°C as received.
Stability:	Stable for 12 months from date of receipt.
Predicted Protein Size:	57 kDa
Gene Name:	centromere protein I
Database Link:	NP_006724 Entrez Gene 2491 Human Q92674
Background:	The product of this gene is involved in the response of gonadal tissues to follicle-stimulating hormone. This gene is also a potential candidate for human X-linked disorders of gonadal development and gametogenesis.
Synonyms:	CENP-I; FSHPRH1; LRPR1
Note:	Immunogen Sequence Homology: Human: 100%; Pig: 92%; Dog: 85%; Horse: 85%



[View online »](#)

Product images:



Host: Rabbit; Target Name: CENPI; Sample Tissue: Thyroid Tumor lysates; Antibody Dilution: 1.0 ug/ml