

## Product datasheet for TA334413

### CENPI Rabbit Polyclonal Antibody

#### Product data:

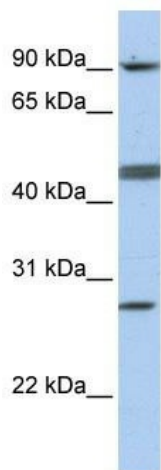
Product Type:	Primary Antibodies
Applications:	IF, WB
Recommended Dilution:	WB, IF
Reactivity:	Human
Host:	Rabbit
Isotype:	IgG
Clonality:	Polyclonal
Immunogen:	The immunogen for anti-CENPI antibody: synthetic peptide directed towards the N terminal of human CENPI. Synthetic peptide located within the following region: SPQKRVKNVQAQNRTSQGSSSFQTTL <del>SAWKVKQDPSNSKNISKH</del> QNNPV
Formulation:	Liquid. Purified antibody supplied in 1x PBS buffer with 0.09% (w/v) sodium azide and 2% sucrose. <i>Note that this product is shipped as lyophilized powder to China customers.</i>
Purification:	Affinity Purified
Conjugation:	Unconjugated
Storage:	Store at -20°C as received.
Stability:	Stable for 12 months from date of receipt.
Predicted Protein Size:	87 kDa
Gene Name:	centromere protein I
Database Link:	<a href="#">NP_006724</a> <a href="#">Entrez Gene 2491 Human</a> <a href="#">Q92674</a>
Background:	CENPI is involved in the response of gonadal tissues to follicle-stimulating hormone. The gene encoding CENPI is also a potential candidate for human X-linked disorders of gonadal development and gametogenesis. The product of this gene is involved in the response of gonadal tissues to follicle-stimulating hormone. This gene is also a potential candidate for human X-linked disorders of gonadal development and gametogenesis.
Synonyms:	CENP-I; FSHPRH1; LRPR1



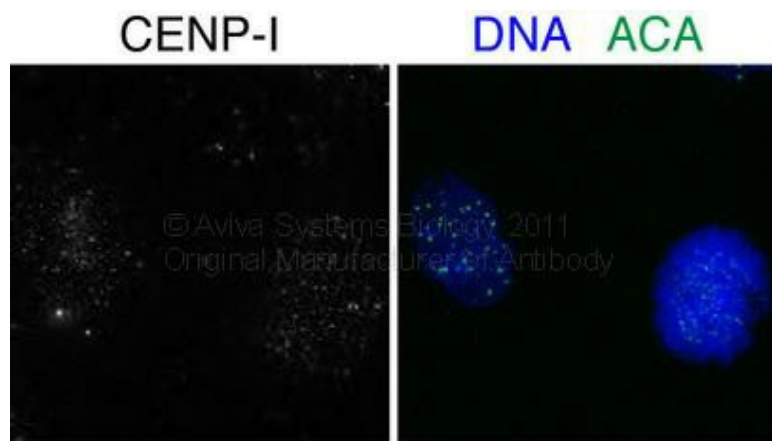
[View online »](#)

**Note:** Immunogen Sequence Homology: Human: 100%

**Product images:**



WB Suggested Anti-CENPI Antibody Titration: 0.2-1 ug/ml; ELISA Titer: 1: 312500; Positive Control: MCF7 cell lysate. CENPI is strongly supported by BioGPS gene expression data to be expressed in Human MCF7 cells



Sample Type: DNA/ACA;

Application data in forum