

Product datasheet for **TA334412**

GLO1 Rabbit Polyclonal Antibody

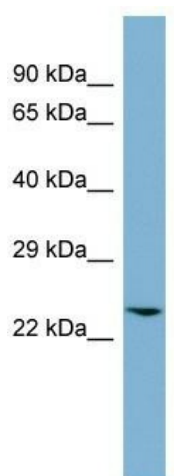
Product data:

Product Type:	Primary Antibodies
Applications:	WB
Recommended Dilution:	WB
Reactivity:	Human
Host:	Rabbit
Isotype:	IgG
Clonality:	Polyclonal
Immunogen:	The immunogen for anti-GLO1 antibody: synthetic peptide directed towards the N terminal of human GLO1. Synthetic peptide located within the following region: TMLRVKDPKSLDFYTRVLGMTLIQKCDFPIMKFSLYFLAYEDKNDIPKE
Formulation:	Liquid. Purified antibody supplied in 1x PBS buffer with 0.09% (w/v) sodium azide and 2% sucrose. <i>Note that this product is shipped as lyophilized powder to China customers.</i>
Purification:	Affinity Purified
Conjugation:	Unconjugated
Storage:	Store at -20°C as received.
Stability:	Stable for 12 months from date of receipt.
Predicted Protein Size:	21 kDa
Gene Name:	glyoxalase I
Database Link:	NP_006699 Entrez Gene 2739 Human Q04760
Background:	The enzyme encoded by this gene is responsible for the catalysis and formation of S-lactoyl-glutathione from methylglyoxal condensation and reduced glutathione. Glyoxalase I is linked to HLA and is localized to 6p21.3-p21.1, between HLA and the centromere.
Synonyms:	GLOD1; GLYI; HEL-S-74
Note:	Immunogen Sequence Homology: Pig: 100%; Rat: 100%; Human: 100%; Mouse: 100%; Guinea pig: 100%; Dog: 93%; Horse: 93%; Bovine: 93%; Rabbit: 93%; Yeast: 86%; Zebrafish: 86%



[View online »](#)

Protein Pathways: Pyruvate metabolism

Product images:

WB Suggested Anti-GLO1 Antibody Titration: 0.2-1 ug/ml; ELISA Titer: 1: 62500; Positive Control: THP-1 cell lysate