

## Product datasheet for **TA334409**

### LASP1 Rabbit Polyclonal Antibody

#### Product data:

Product Type:	Primary Antibodies
Applications:	WB
Recommended Dilution:	WB
Reactivity:	Human
Host:	Rabbit
Isotype:	IgG
Clonality:	Polyclonal
Immunogen:	The immunogen for anti-LASP1 antibody: synthetic peptide directed towards the C terminal of human LASP1. Synthetic peptide located within the following region: SYGGYKEPAAPVSIQRSAPGGGGKRYRAVYDYSAADEDEVSFQDGDITVN
Formulation:	Liquid. Purified antibody supplied in 1x PBS buffer with 0.09% (w/v) sodium azide and 2% sucrose. <i>Note that this product is shipped as lyophilized powder to China customers.</i>
Purification:	Affinity Purified
Conjugation:	Unconjugated
Storage:	Store at -20°C as received.
Stability:	Stable for 12 months from date of receipt.
Predicted Protein Size:	30 kDa
Gene Name:	LIM and SH3 protein 1
Database Link:	<a href="#">NP_006139</a> <a href="#">Entrez Gene 3927 Human Q14847</a>



[View online »](#)

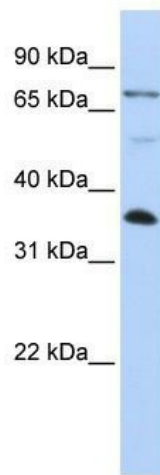
**Background:** LASP1 is a member of a LIM protein subfamily characterized by a LIM motif and a domain of Src homology region 3. It functions as an actin-binding protein and possibly in cytoskeletal organization. This gene encodes a member of a LIM protein subfamily which is characterized by a LIM motif and a domain of Src homology region 3. This protein functions as an actin-binding protein and possibly in cytoskeletal organization. Publication Note: This RefSeq record includes a subset of the publications that are available for this gene. Please see the Entrez Gene record to access additional publications.

**Synonyms:** Lasp-1; MLN50

**Note:** Immunogen Sequence Homology: Dog: 100%; Pig: 100%; Rat: 100%; Horse: 100%; Human: 100%; Mouse: 100%; Bovine: 100%; Rabbit: 100%; Guinea pig: 100%; Zebrafish: 93%

**Protein Families:** Druggable Genome

### Product images:



WB Suggested Anti-LASP1 Antibody Titration: 0.2-1 ug/ml; ELISA Titer: 1: 12500; Positive Control: HepG2 cell lysate. LASP1 is supported by BioGPS gene expression data to be expressed in HepG2