

## Product datasheet for **TA334408**

### LASP1 Rabbit Polyclonal Antibody

#### Product data:

|                         |   |
|-------------------------|---|
| Product Type:           | Primary Antibodies  |
| Applications:           | WB  |
| Recommended Dilution:   | WB  |
| Reactivity:             | Human   |
| Host:                   | Rabbit  |
| Isotype:                | IgG   |
| Clonality:              | Polyclonal  |
| Immunogen:              | The immunogen for anti-LASP1 antibody: synthetic peptide directed towards the middle region of human LASP1. Synthetic peptide located within the following region:<br>IKKTQDQISNIKYHEEFKSRMGPSGGEGMEPERRDSQDGSSYRRPLEQQ |
| Formulation:            | Liquid. Purified antibody supplied in 1x PBS buffer with 0.09% (w/v) sodium azide and 2% sucrose.<br><i>Note that this product is shipped as lyophilized powder to China customers.</i>                                 |
| Purification:           | Affinity Purified   |
| Conjugation:            | Unconjugated  |
| Storage:                | Store at -20°C as received.   |
| Stability:              | Stable for 12 months from date of receipt.  |
| Predicted Protein Size: | 30 kDa  |
| Gene Name:              | LIM and SH3 protein 1   |
| Database Link:          | <a href="#">NP_006139</a><br><a href="#">Entrez Gene 3927 Human Q14847</a>  |



[View online »](#)

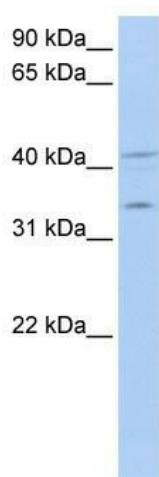
**Background:** LASP1 is a member of a LIM protein subfamily characterized by a LIM motif and a domain of Src homology region 3. It functions as an actin-binding protein and possibly in cytoskeletal organization. This gene encodes a member of a LIM protein subfamily which is characterized by a LIM motif and a domain of Src homology region 3. This protein functions as an actin-binding protein and possibly in cytoskeletal organization. Publication Note: This RefSeq record includes a subset of the publications that are available for this gene. Please see the Entrez Gene record to access additional publications.

**Synonyms:** Lasp-1; MLN50

**Note:** Immunogen Sequence Homology: Dog: 100%; Pig: 100%; Rat: 100%; Horse: 100%; Human: 100%; Mouse: 100%; Bovine: 100%; Rabbit: 100%; Zebrafish: 100%; Guinea pig: 100%

**Protein Families:** Druggable Genome

### Product images:



WB Suggested Anti-LASP1 Antibody Titration: 0.2-1 ug/ml; ELISA Titer: 1: 2500; Positive Control: MCF7 cell lysate