

Product datasheet for **TA334405**

14-3-3 sigma (SFN) Rabbit Polyclonal Antibody

Product data:

Product Type:	Primary Antibodies
Applications:	WB
Recommended Dilution:	WB, IHC
Reactivity:	Human
Host:	Rabbit
Isotype:	IgG
Clonality:	Polyclonal
Immunogen:	The immunogen for anti-SFN antibody: synthetic peptide directed towards the middle region of human SFN. Synthetic peptide located within the following region: FHYEIANSPEEAISLAKTTFDEAMADLHTLSEDSYKDSTLIMQLLRDNL
Formulation:	Liquid. Purified antibody supplied in 1x PBS buffer with 0.09% (w/v) sodium azide and 2% sucrose. <i>Note that this product is shipped as lyophilized powder to China customers.</i>
Purification:	Affinity Purified
Conjugation:	Unconjugated
Storage:	Store at -20°C as received.
Stability:	Stable for 12 months from date of receipt.
Predicted Protein Size:	28 kDa
Gene Name:	stratifin
Database Link:	NP_006133 Entrez Gene 2810 Human P31947
Background:	SFN is an adapter protein implicated in the regulation of a large spectrum of both general and specialized signaling pathway. SFN binds to a large number of partners, usually by recognition of a phosphoserine or phosphothreonine motif. Binding generally results in the modulation of the activity of the binding partner. When bound to KRT17, SFN regulates protein synthesis and epithelial cell growth by stimulating Akt/mTOR pathway.
Synonyms:	YWHAS



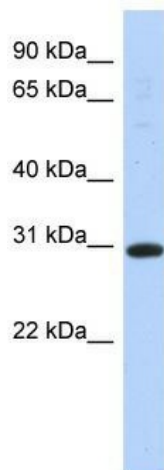
[View online »](#)

Note: Immunogen Sequence Homology: Dog: 100%; Pig: 100%; Rat: 100%; Horse: 100%; Human: 100%; Mouse: 100%; Sheep: 100%; Bovine: 100%; Rabbit: 100%; Guinea pig: 100%; Yeast: 93%; Zebrafish: 86%

Protein Families: Druggable Genome, Secreted Protein

Protein Pathways: Cell cycle, p53 signaling pathway

Product images:



WB Suggested Anti-SFN Antibody Titration: 0.2-1 ug/ml; ELISA Titer: 1: 1562500; Positive Control: Transfected 293T