

Product datasheet for **TA334403**

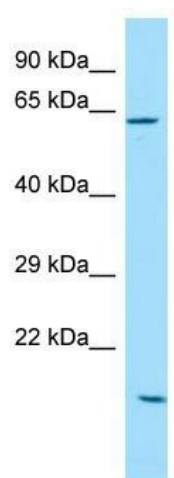
ANKRD57 (SOWAHC) Rabbit Polyclonal Antibody

Product data:

Product Type:	Primary Antibodies
Applications:	WB
Recommended Dilution:	WB
Reactivity:	Human
Host:	Rabbit
Isotype:	IgG
Clonality:	Polyclonal
Immunogen:	The immunogen for anti-SOWAHC antibody is: synthetic peptide directed towards the C-terminal region of Human SOWAHC. Synthetic peptide located within the following region: TYKLSHALEDGGDHHHHHSAEGWVGKAKDPGRKASGSSSGRIKPRLNK
Formulation:	Liquid. Purified antibody supplied in 1x PBS buffer with 0.09% (w/v) sodium azide and 2% sucrose.
Purification:	Affinity Purified
Conjugation:	Unconjugated
Storage:	Store at -20°C as received.
Stability:	Stable for 12 months from date of receipt.
Predicted Protein Size:	58 kDa
Gene Name:	sosondowah ankyrin repeat domain family member C
Database Link:	NP_075392 Entrez Gene 65124 Human Q53LP3
Background:	The function of this protein remains unknown.
Synonyms:	ANKRD57; C2orf26
Note:	Immunogen Sequence Homology: Human: 100%; Rabbit: 100%; Dog: 86%; Rat: 86%; Horse: 86%; Mouse: 86%



[View online »](#)

Product images:


WB Suggested Anti-SOWAHC Antibody; Titration:
1.0 ug/ml; Positive Control: Hela Whole cell